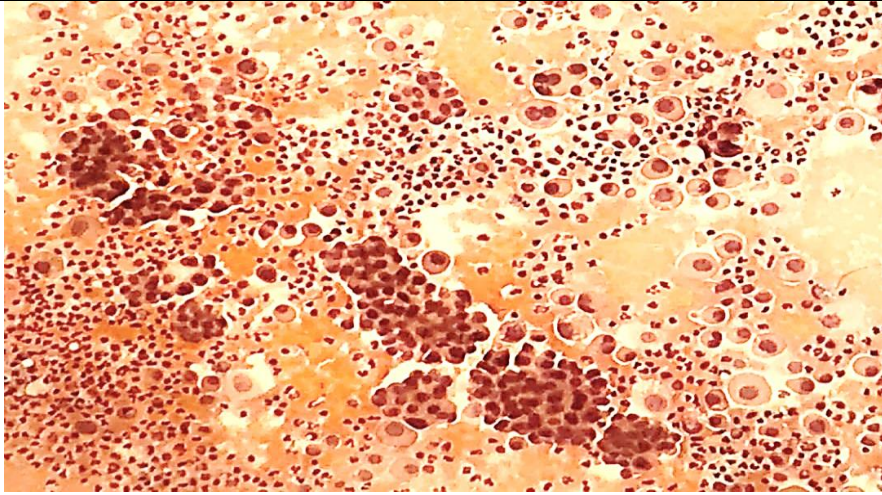
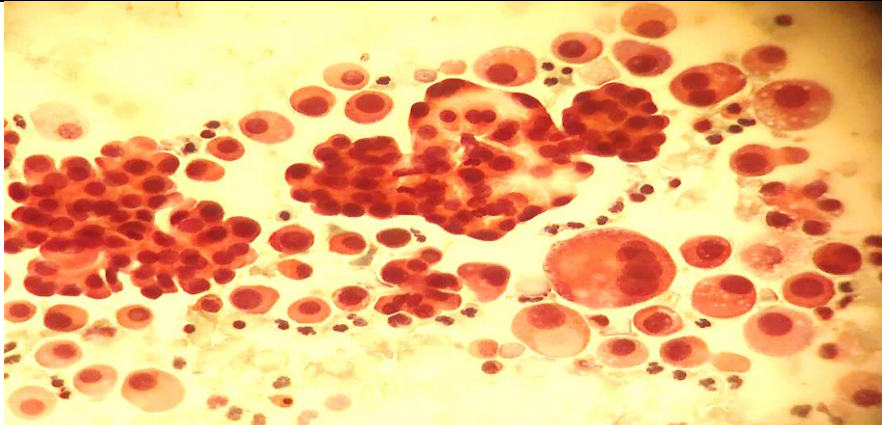
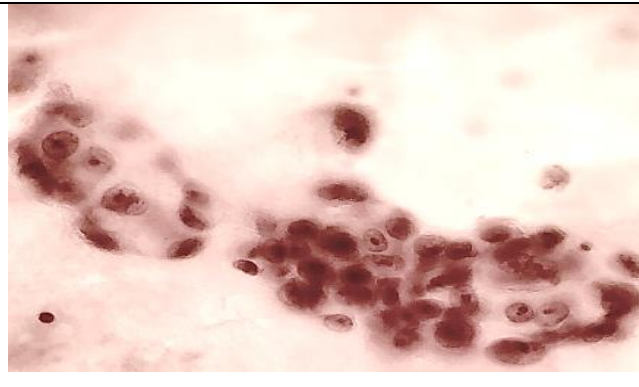

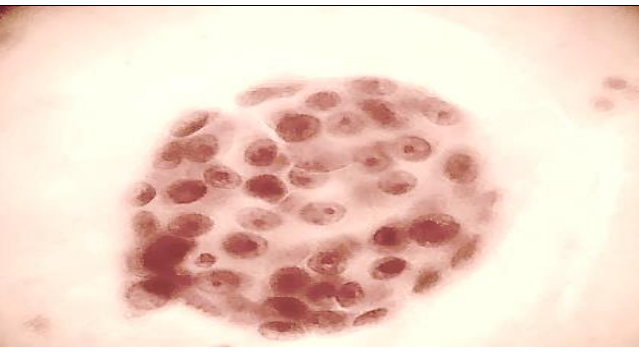


کارگاه مایعات سرورز 1
شماره 1 تا 21

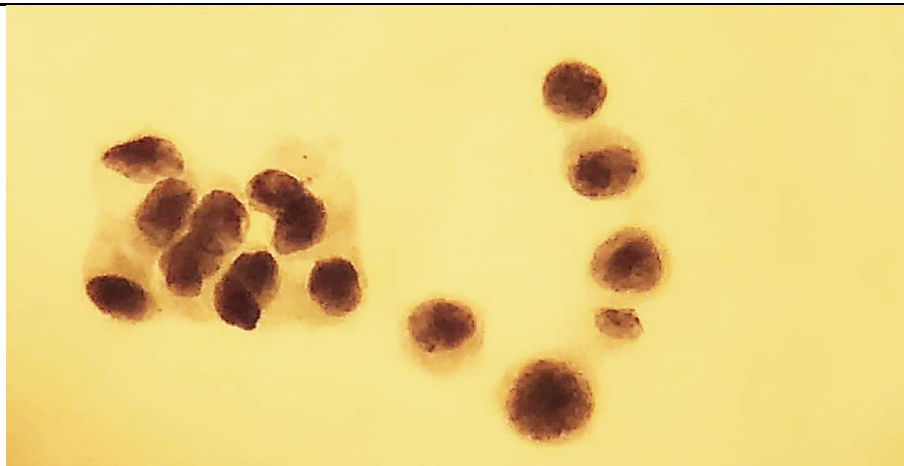
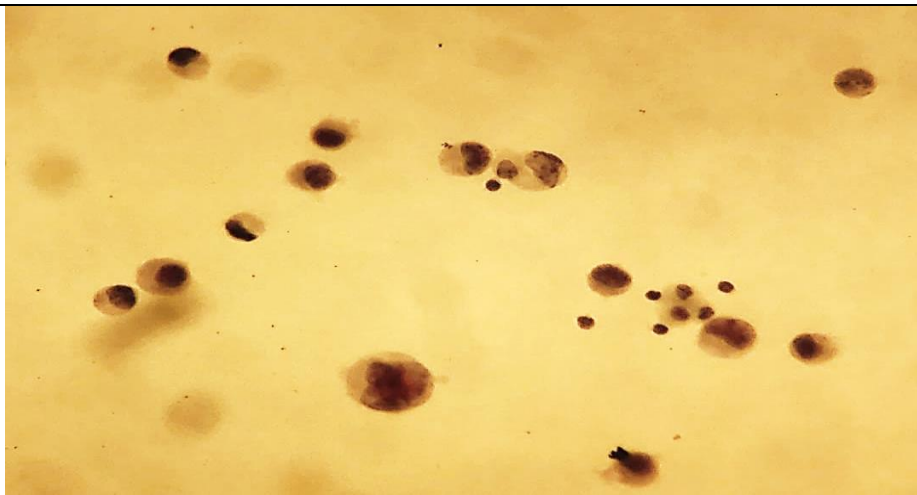
| | |
|---|---|
| Case 1 | Pleural fluid from 65 year old man |
| Description: 1. cellular smears,,clusters and papilla of mesothelial cells 2. nuclear abnormalities (nuclear enlargement, binucleation and multinucleation) | |
| Diagnosis: Malignant mesothelioma | |
|  | |
|  | |

| | |
|--|--|
| Case 2 | Pleural fluid from 45 year old lady |
| Description: Clusters, hollow proliferation sphere and cell ball of foreign population | |
| Diagnosis: Lung adenocarcinoma | |
| |  |
| |  |
| |  |

Case 3**Pleural fluid from 48 year old man****Description:**

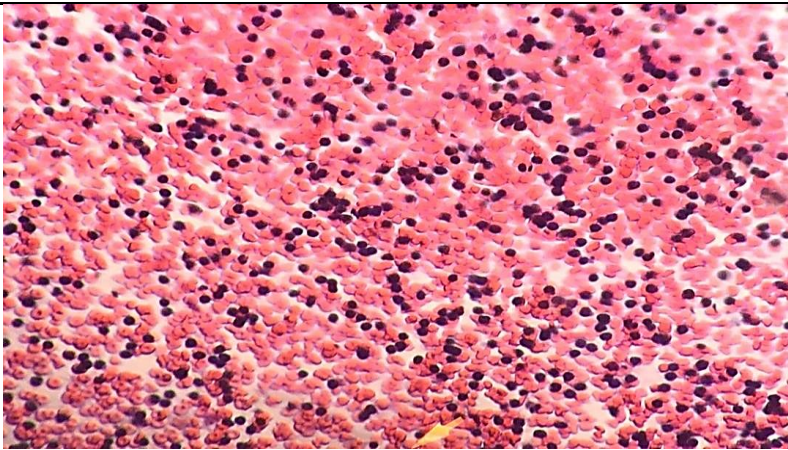
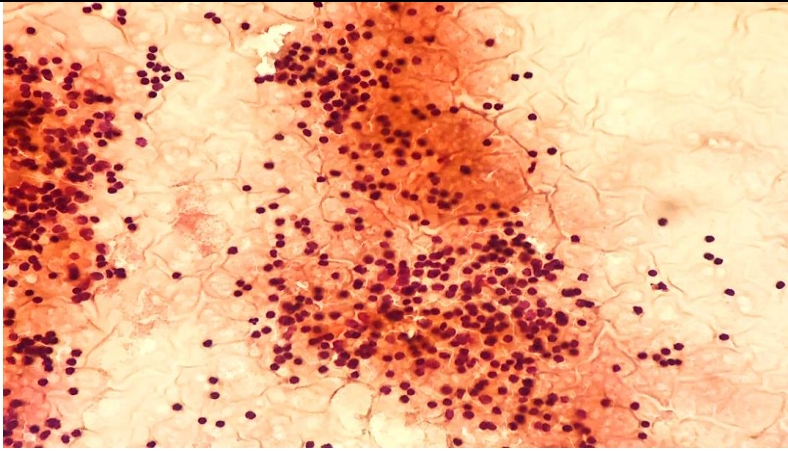
Non-cohesive, solitary cells with eccentric nuclei without the rim of cytoplasm along the nuclear margin.

Diagnosis: Metastatic poorly cohesive gastric adenocarcinoma



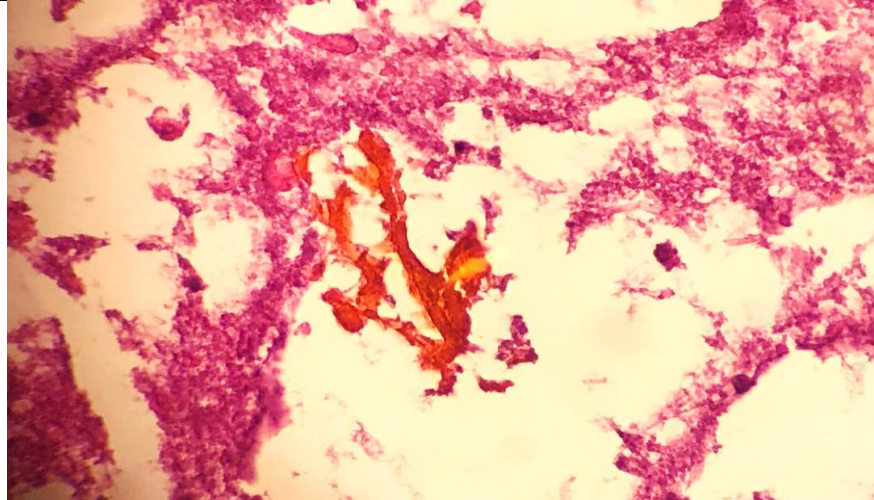
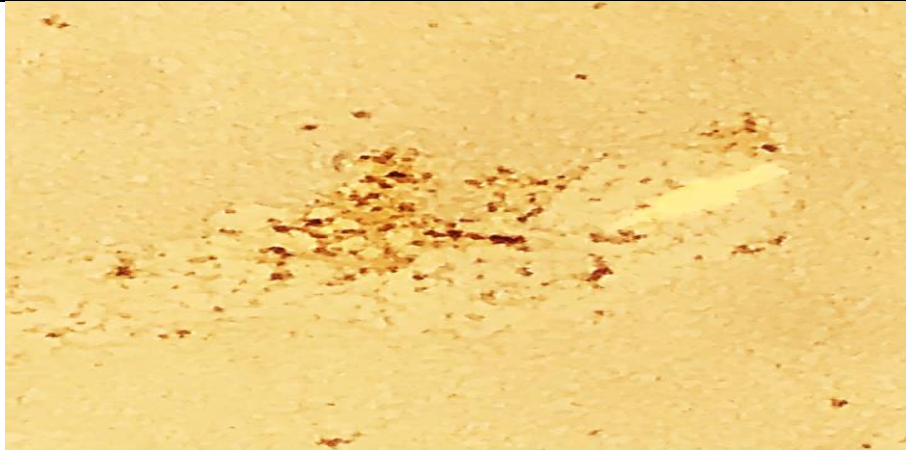
Case 4**Pleural fluid from 35 year old lady****Description:**

Mature lymphocytes infiltrate

Diagnosis: lymphocytic pleuritic suggest TB

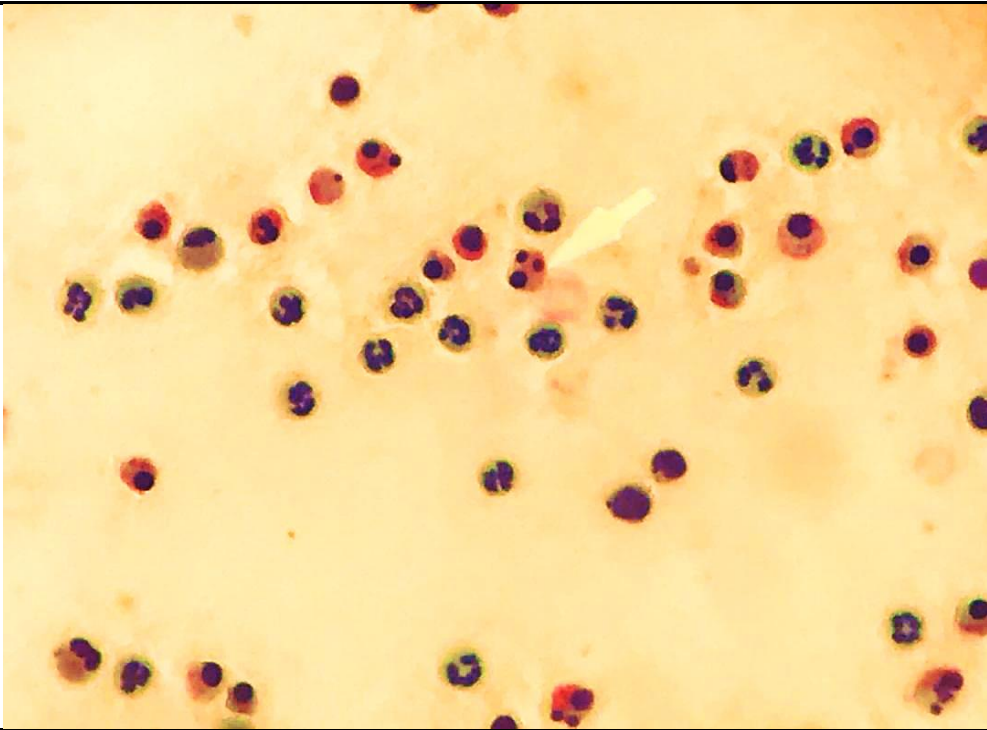
Case 5**Peritoneal fluid from 55 year old man with acute abdomen****Description:**

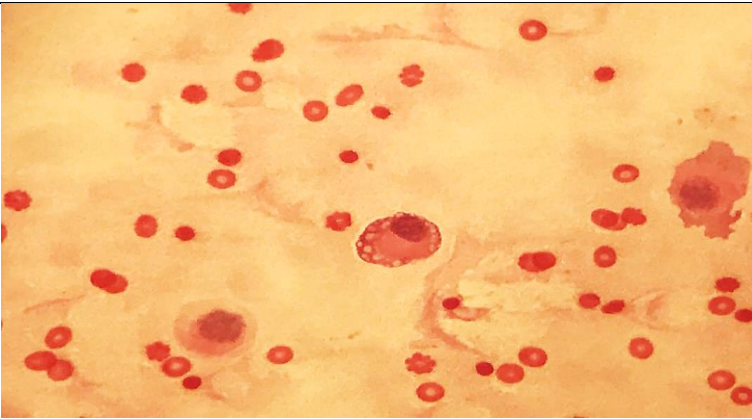
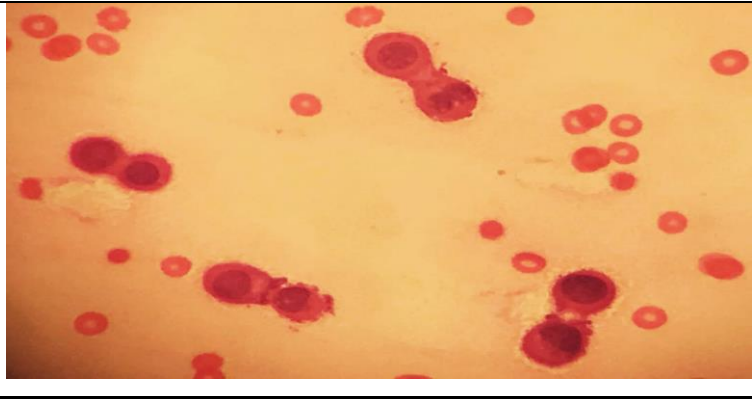
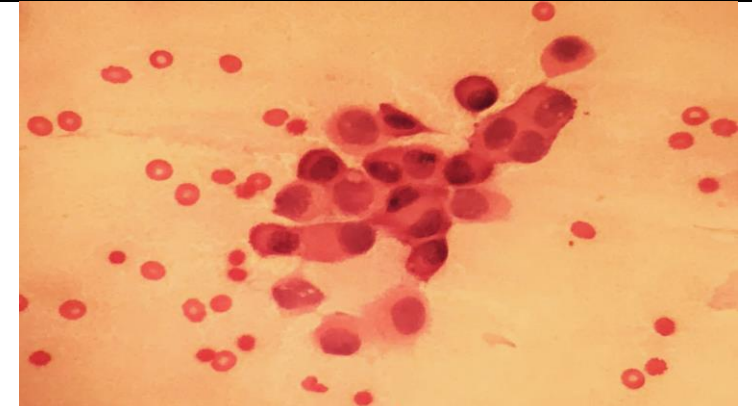
Yellow bile pigments in smear and cell block

Diagnosis: bile pigment

Case 6**Pleural fluid****Description:**

PMNs leukocytes with nuclear karyorrhexia

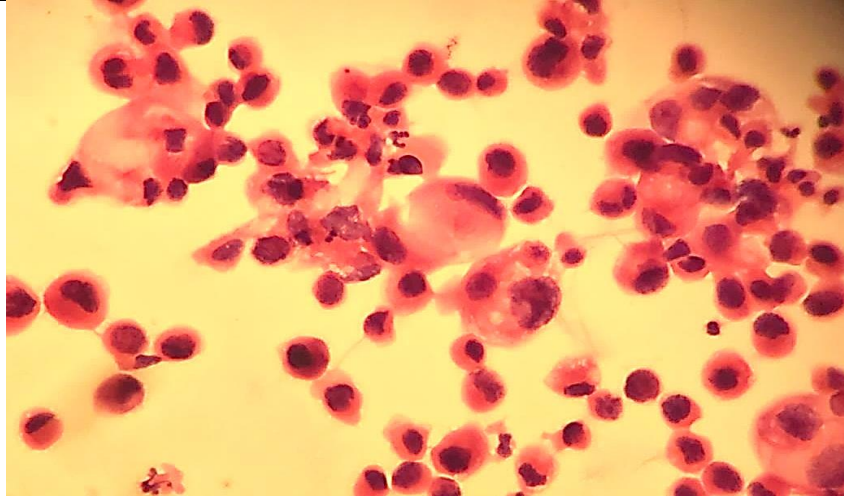
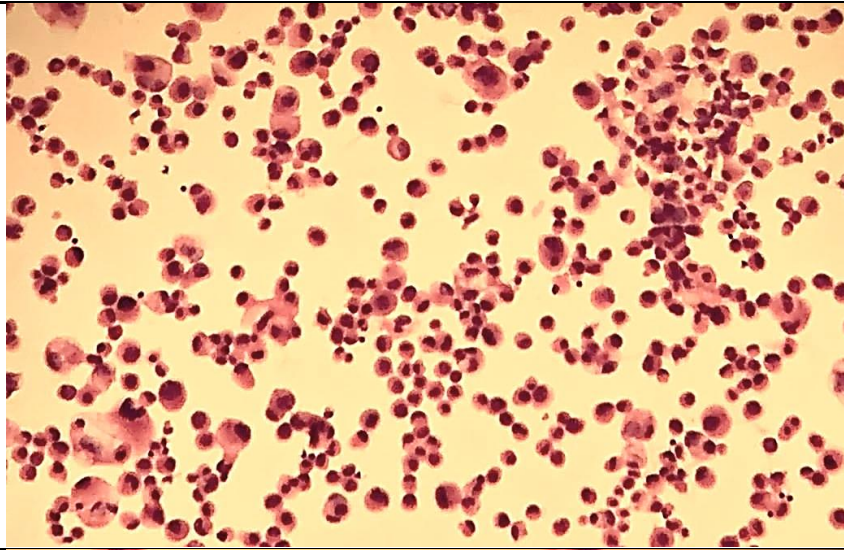
Diagnosis: PMNs infiltrate with Karyorrhexis

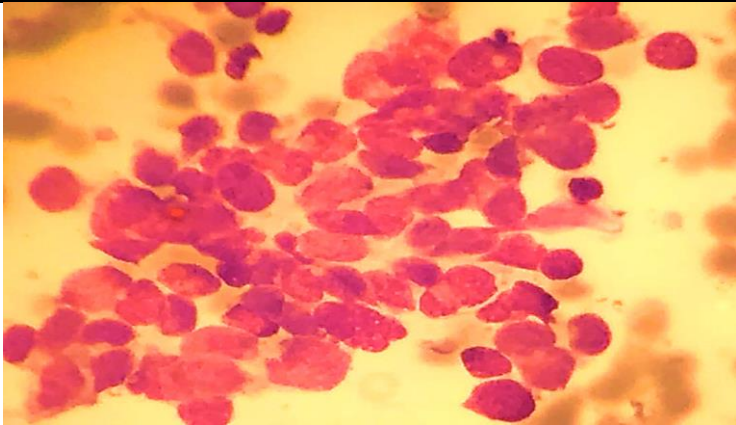
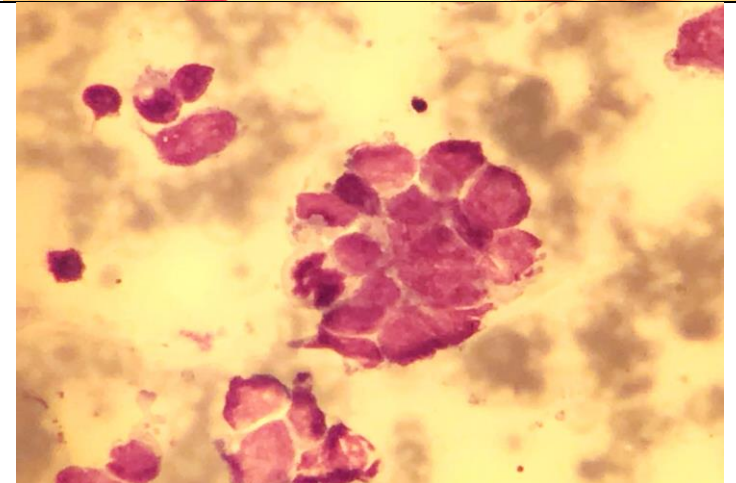
| | | |
|--|--|--|
| Case 7 | Pleural fluid | |
| Description: Isolated mesothelial cells with peripheral vacuolation mesothelial cells showing a clear gap or "window" mesothelial cells sheets | | |
| Diagnosis: Reactive mesothelial cells | | |
| |  | |
| |  | |
| |  | |

Case 8**Pleural fluid from 45 year old man****Description:**

non-cohesive ,solitary cells with eccentric nuclei and signet ring cells

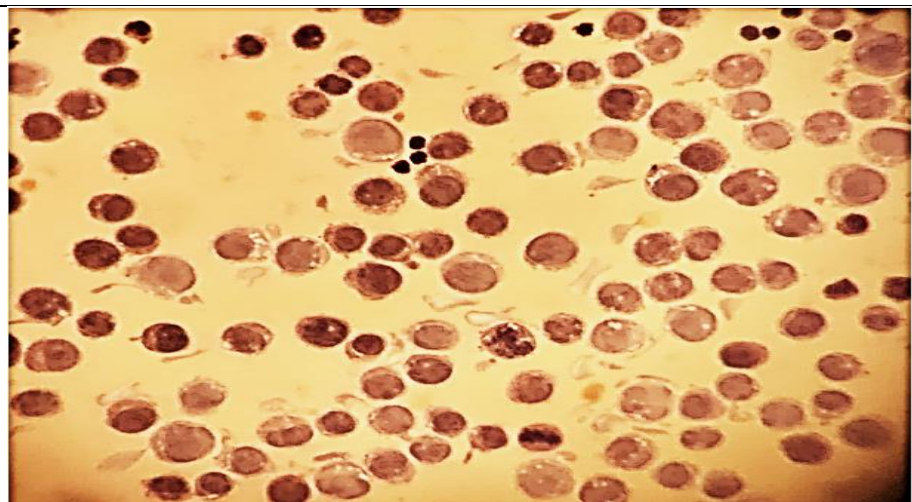
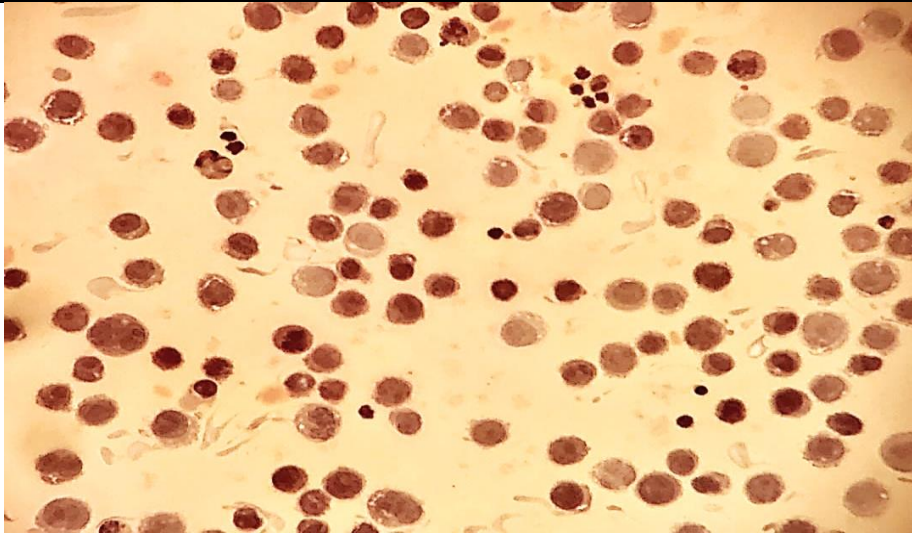
Diagnosis: metastatic poorly differentiated gastric adenocarcinoma

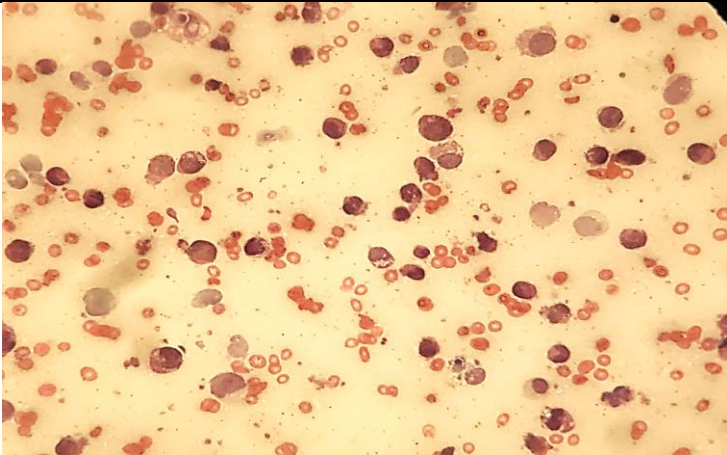
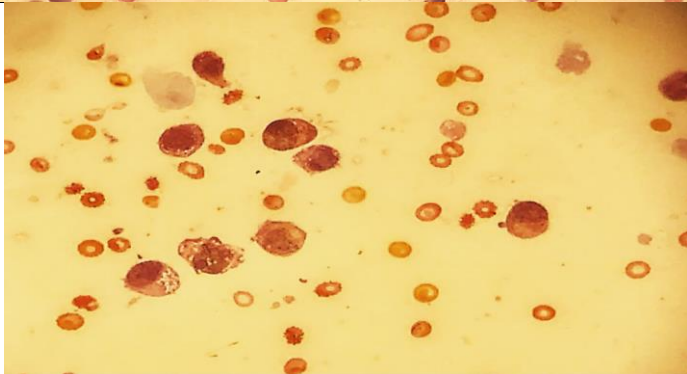
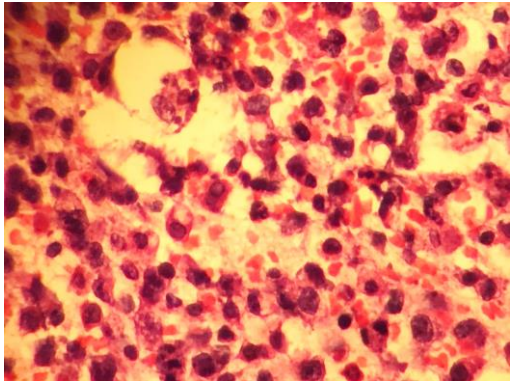
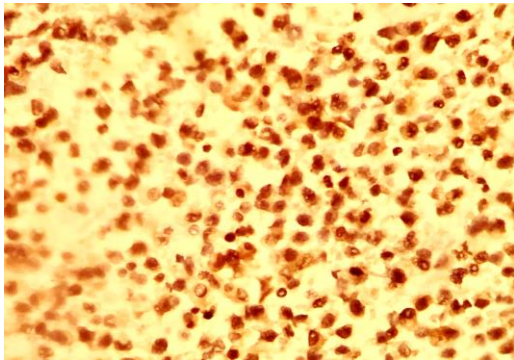


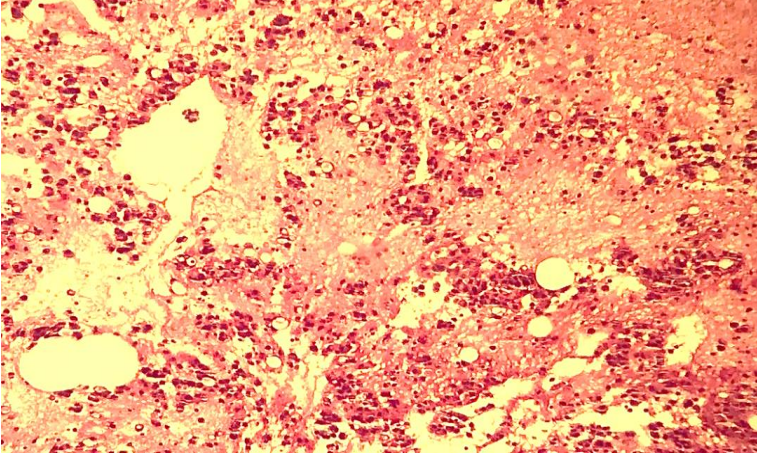
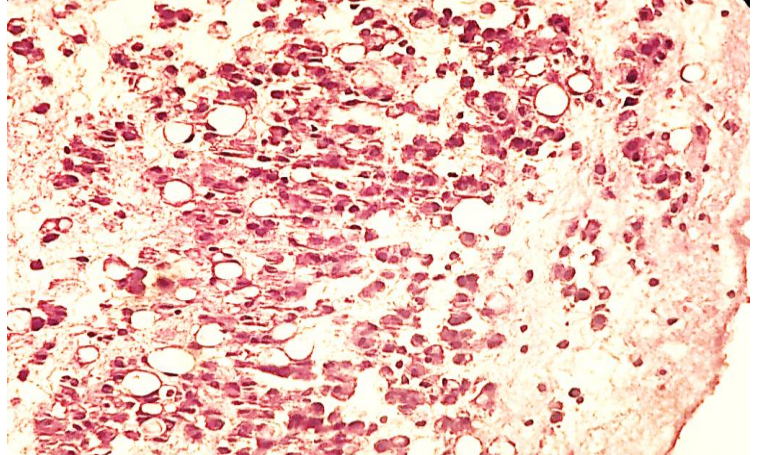
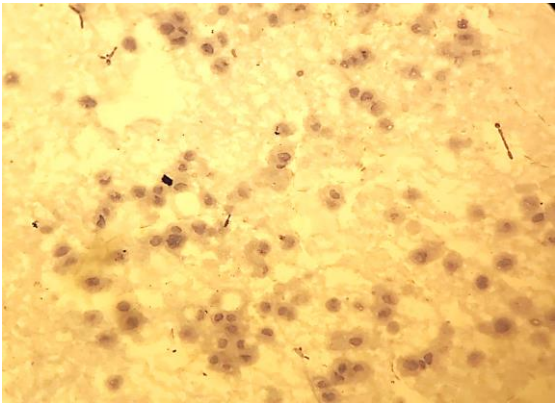
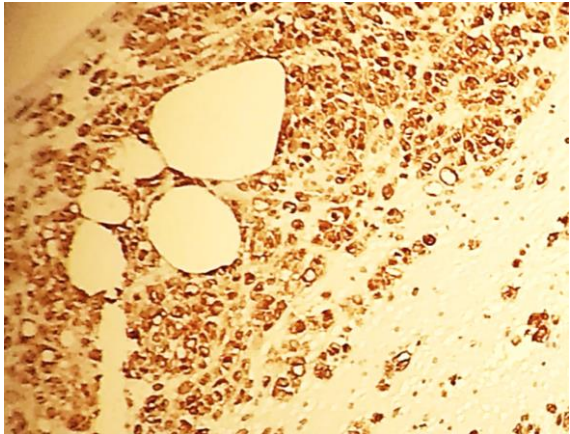
| | | |
|--|--|--|
| Case 9 | Peritoneal fluid from 55 year old man with acute abdomen | |
| Description: Small cells with little cytoplasm and high N/C ratio with nuclear molding | | |
| Diagnosis: NET (In favor of poorly differentiated/ small cell carcinoma) | | |
| |  | |
| |  | |

Case 10**Peritoneal fluid from 55 year old man****Description:**

Non-cohesive medium to large-sized lymphoid cells with apoptotic bodies

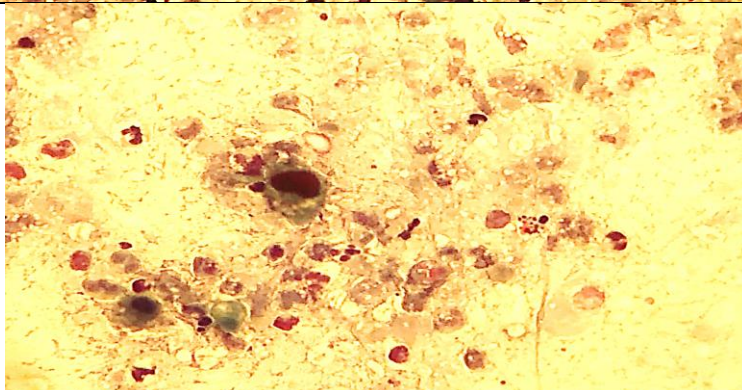
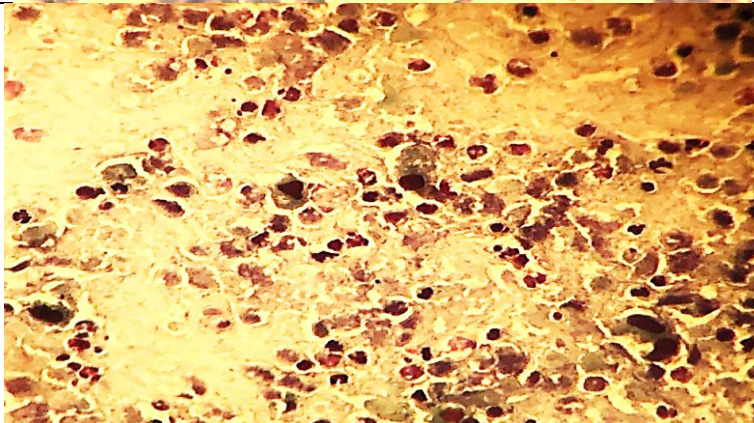
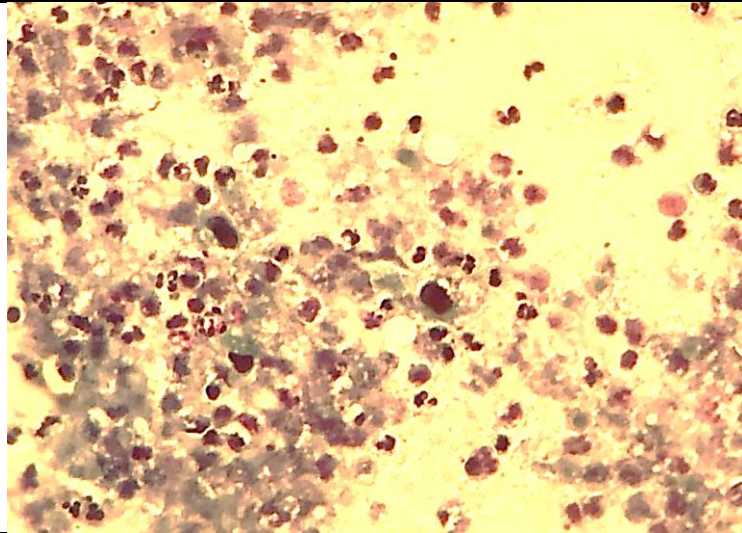
Diagnosis: Diffuse large B cell lymphoma

| | |
|---|---|
| Case 11 | Pleural fluid from 25 year old girl |
| Description: non-cohesive large lymphoid cells are present with variably irregular nuclei. | |
| Diagnosis: Diffuse large cell lymphoma | |
|  | |
|  | |
| <p>Cell block</p>  | <p>CD20</p>  |

| | |
|--|---|
| Case 12 | Consulted pleural fluid cell block from 52 year old with diagnosis malignant |
| Description: Aggregates of bland looking epithelioid cells | |
| Diagnosis: Histiocytes aggregate | |
|  | |
|  | |
| CK7 & CK 20(Same)  | CD68  |

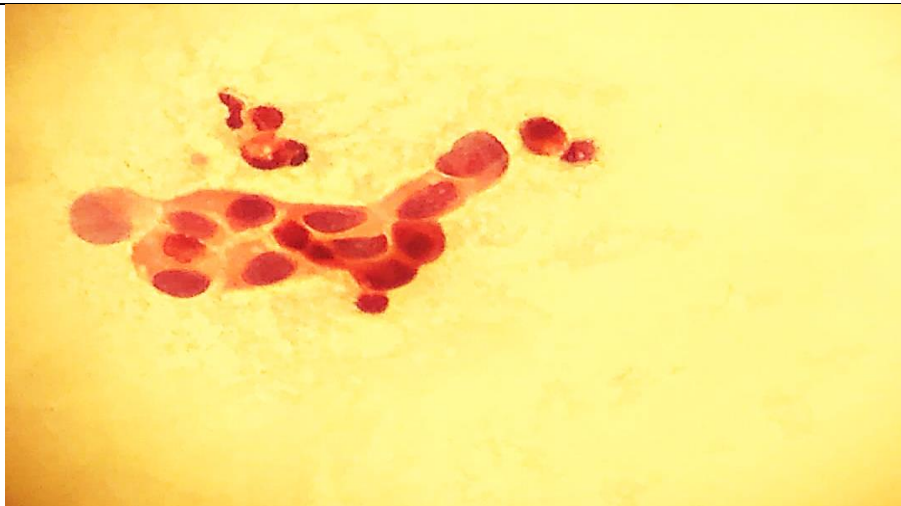
Case 13**Pleural fluid of 60 year old****Description:**

Isolated cells with hyperchrome (india ink like) nuclei and dense cyanophilic cytoplasm

Diagnosis: Metastatic SCC

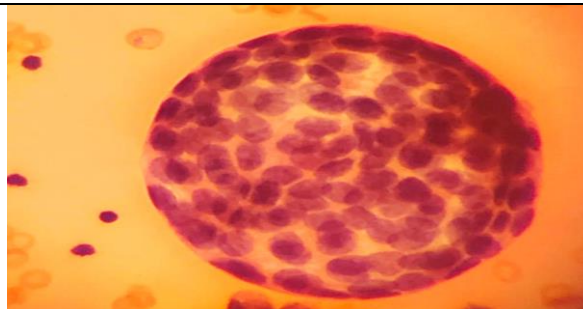
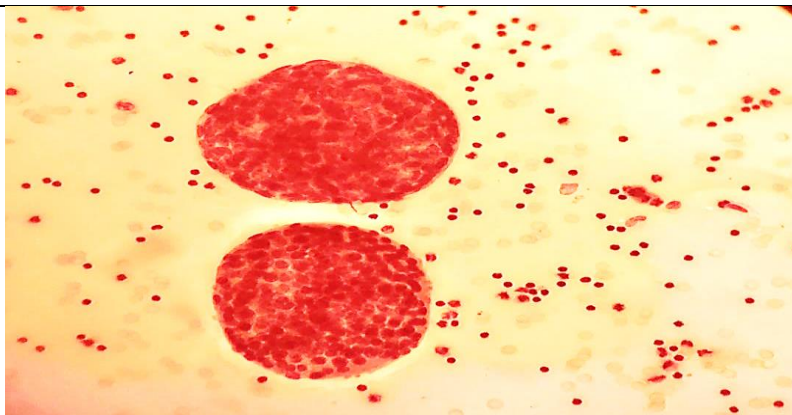
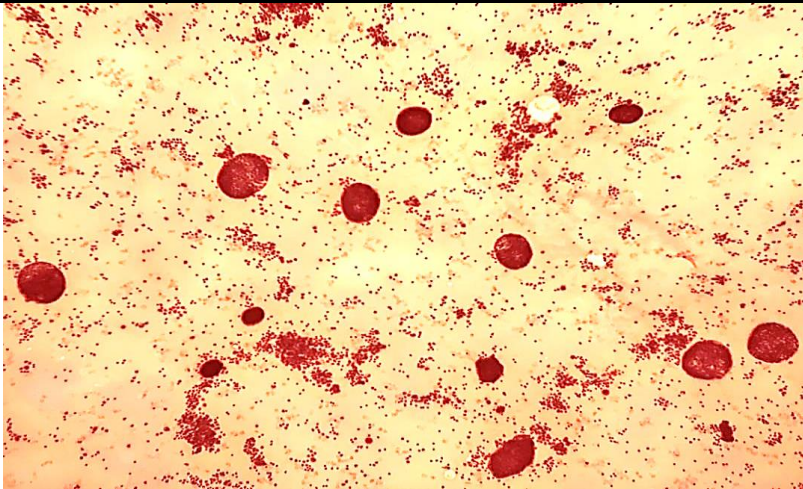
Case 14**Peritoneal fluid from 40 year old man****Description:**

Cluster of polygonal epithelial cells contained eosinophilic cytoplasm .

Diagnosis: HCC

Case 15**Pleural fluid from 50 year old lady****Description:**

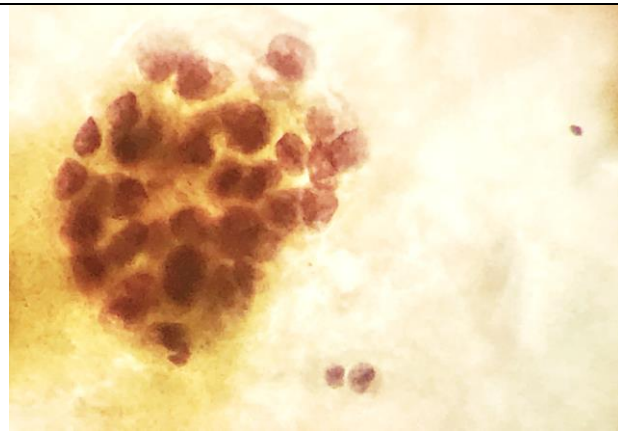
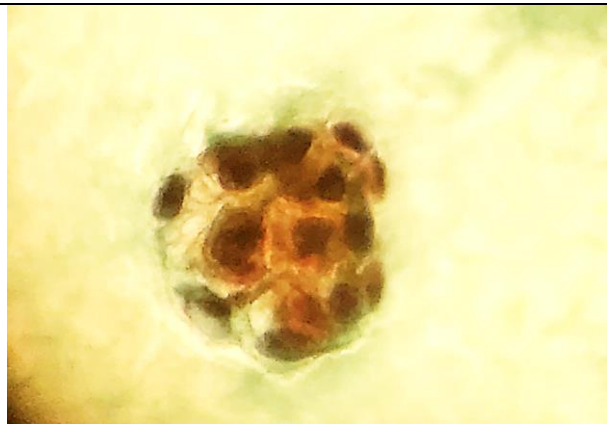
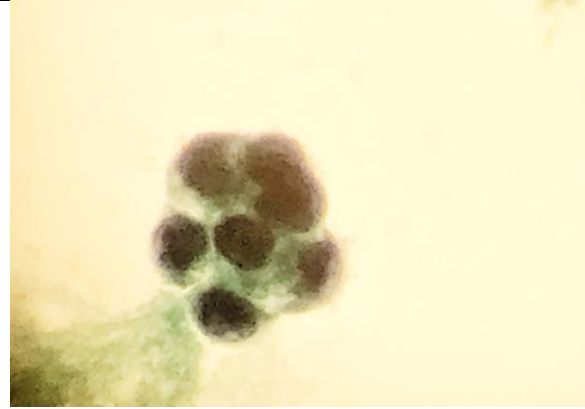
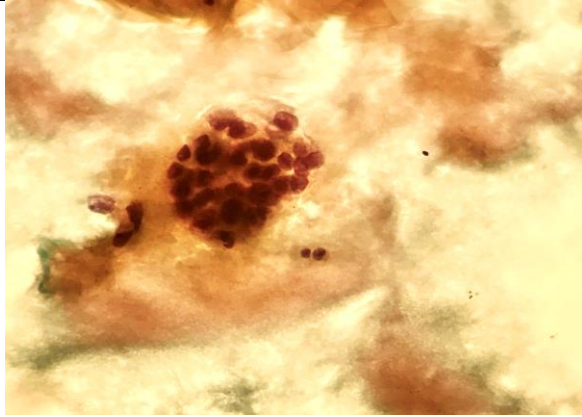
Cannonball (proliferation spheres) of epithelial cells with smooth community borders

Diagnosis: Invasive ductal carcinoma

Case 16**Peritoneal fluid from 60 year old lady****Description:**

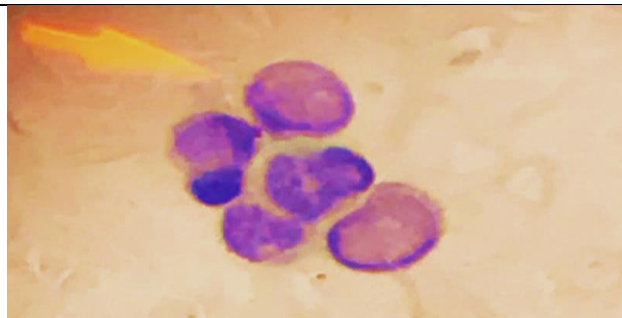
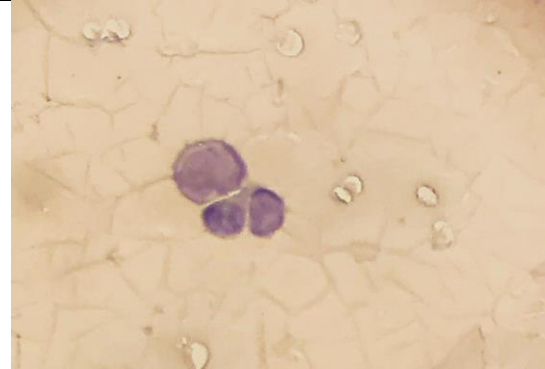
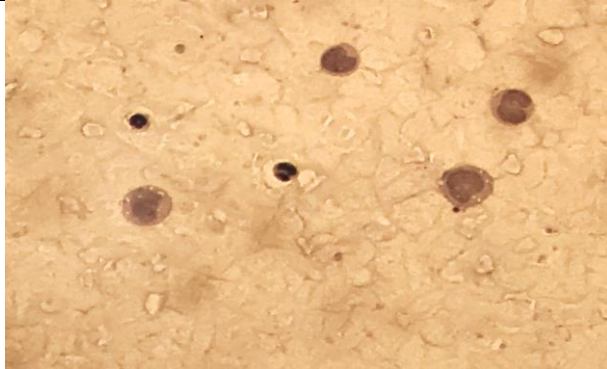
The three-dimensional group of epithelial cells with atypical nuclei .

Diagnosis: Metastatic endometrial carcinoma



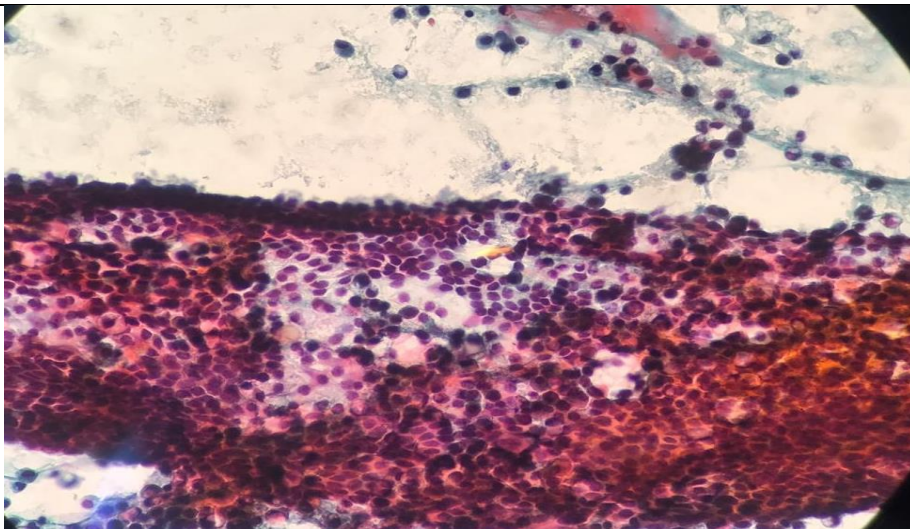
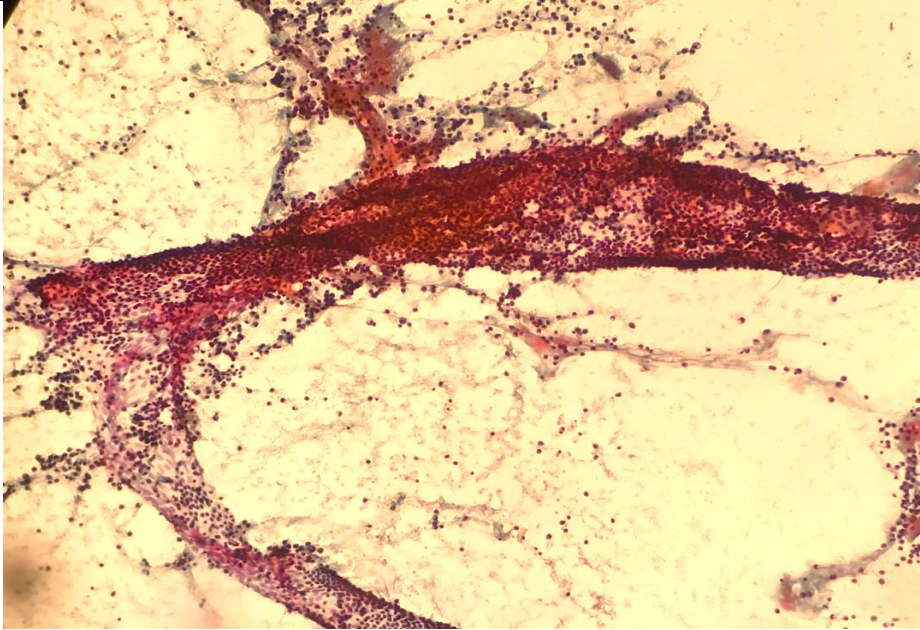
Case 17**Pleural fluid from 58 year old man****Description:**

Some myeloblasts and myelocytes and granulocytes

Diagnosis: Myelofibrosis

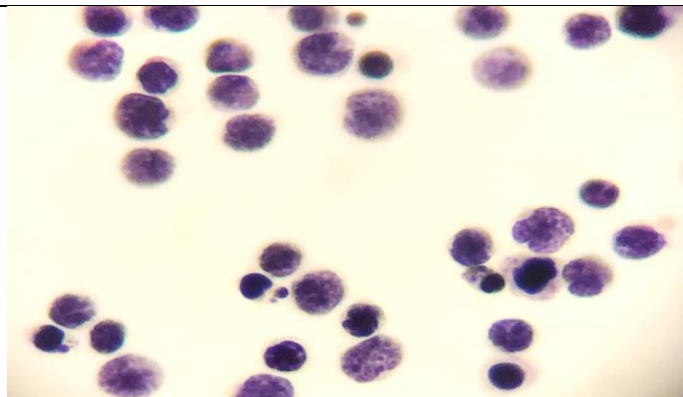
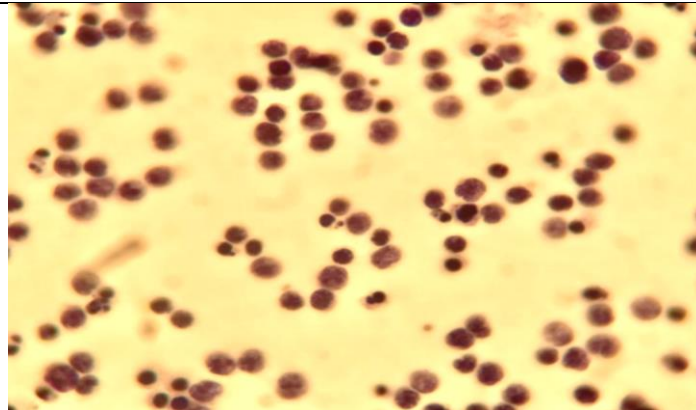
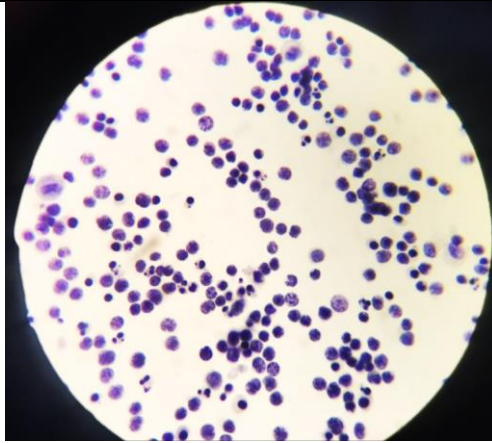
Case 18**Peitoneal washing fluid from 45 year old lady****Description:**

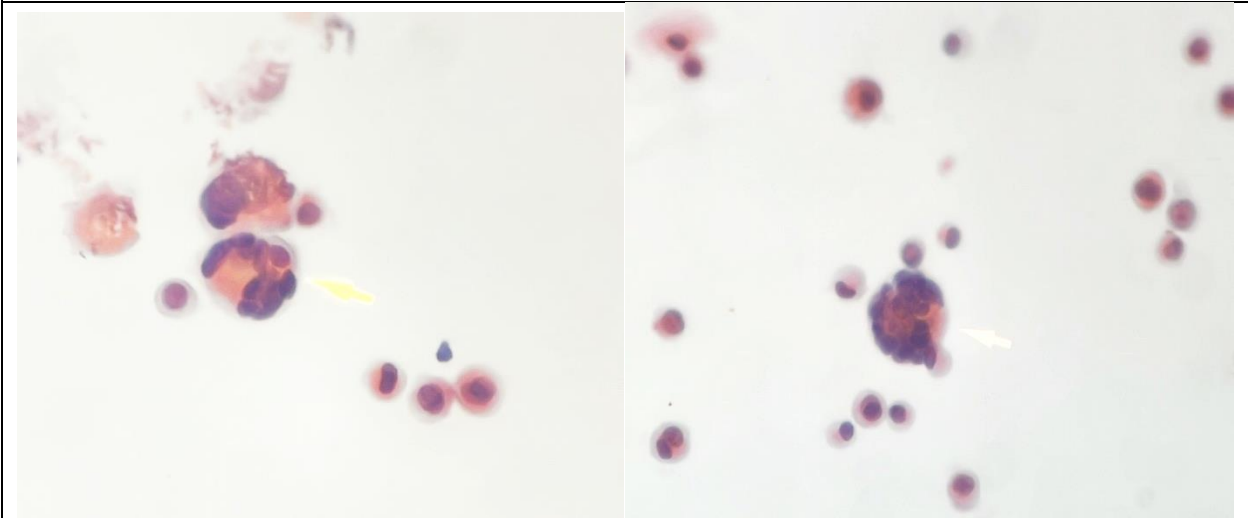
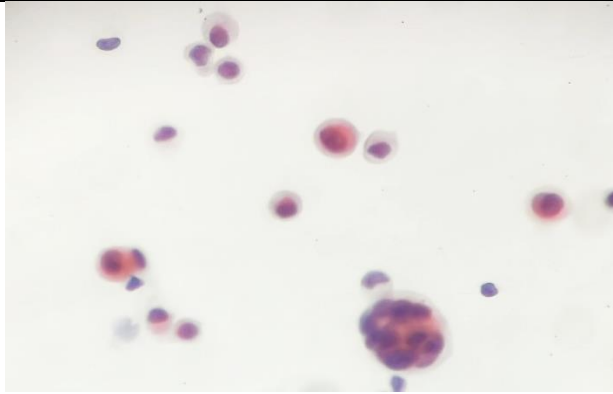
Large sheets of mesothelial cells

Diagnosis: Peitoneal washing fluid / Negative

Case 19**Pleural fluid from 18 year old girl****Description:**

Lymphoblasts , slightly larger than mature lymphocytes and open chromatin pattern

Diagnosis: ALL

Case 20**Pleural fluid from 40 year old man****Diagnosis: mesothelial cells and multinucleated mesothelial cells**

Case 21**Peritoneal washing fluid**

Description:Endometrial type epithelial cells forming clusters admixed with siderophages

Diagnosis: endometriosis

