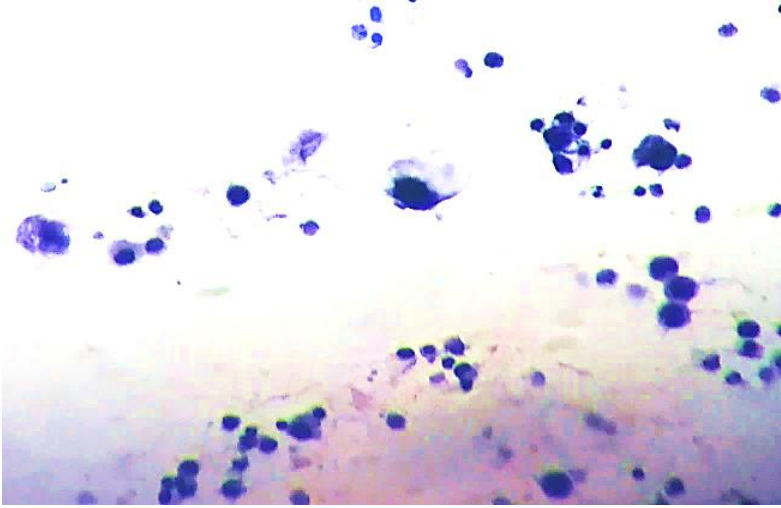
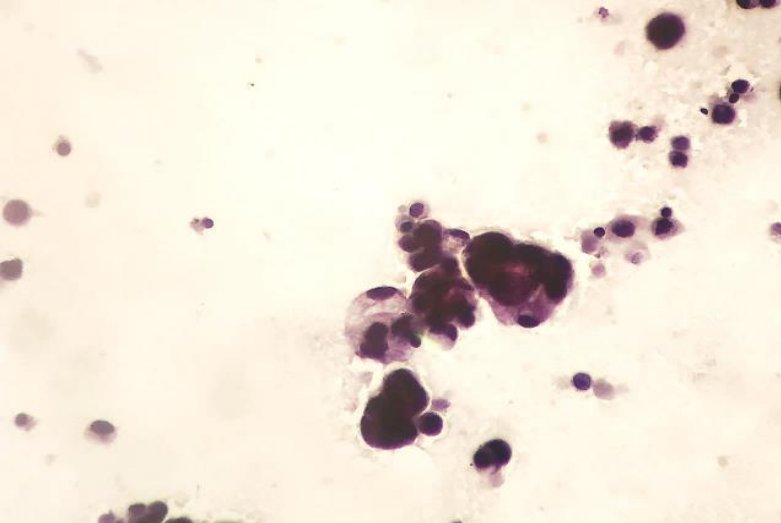
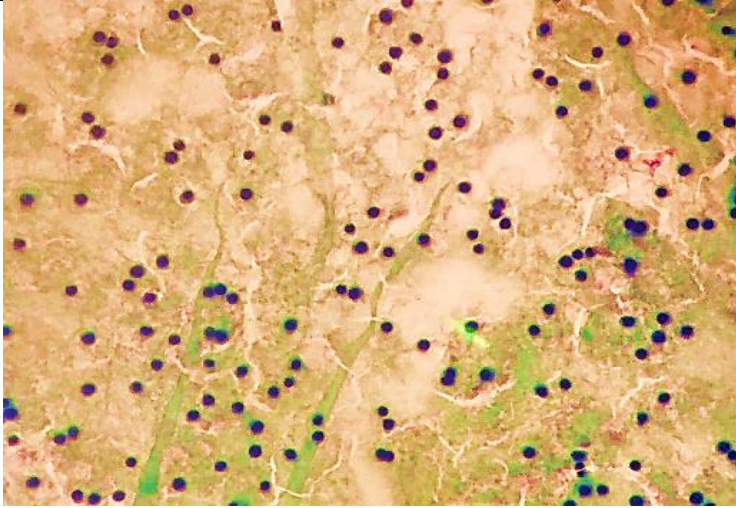
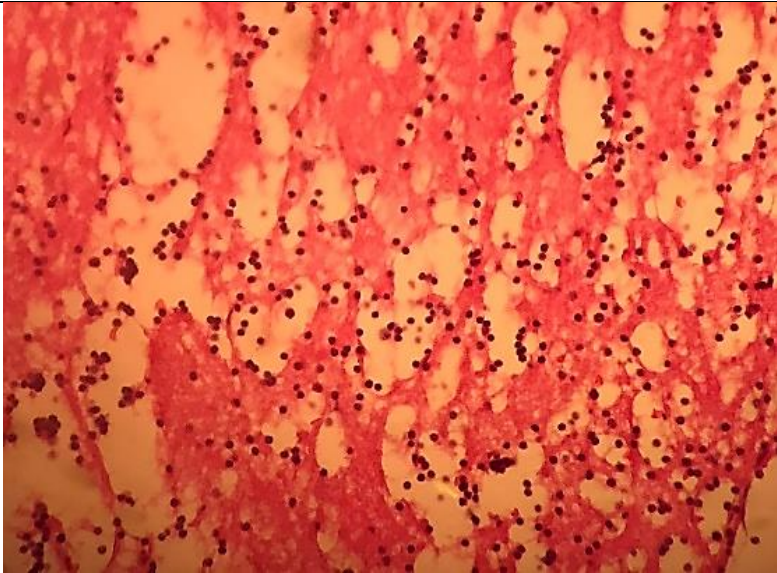


<b>Case 50</b>	<b>Pleural fluid</b>
<b>Description:</b> Small groups and isolated epithelial cells of epithelial cells with mild nuclear atypia and hyperchromasia	
<b>Diagnosis: gastric carcinoma</b>	
	
	

<b>Case 51</b>	<b>Pleural fluid</b>
<b>Description:</b> Mature lymphocytes .	
<b>Diagnosis: Lymphocytic pleuritic/TB</b>	
 <p data-bbox="753 1020 870 1060"><b>Smear</b></p>	
 <p data-bbox="721 1629 902 1669"><b>Cell block</b></p>	

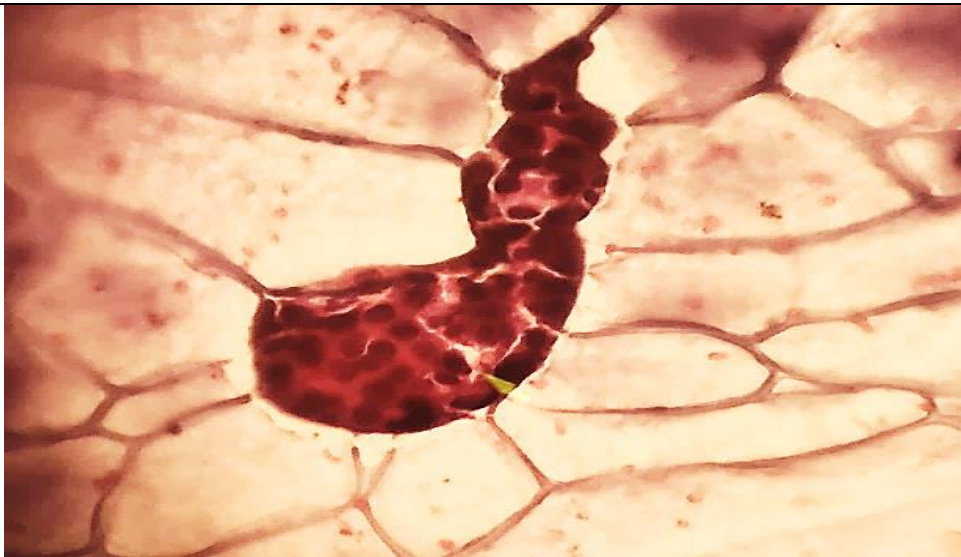
**Case 52**

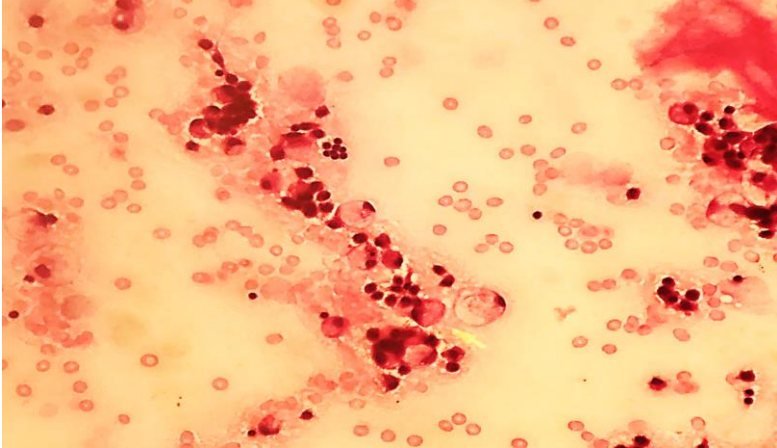
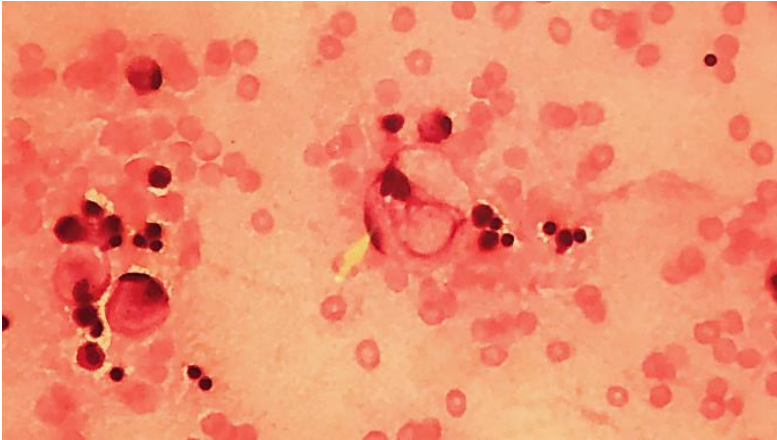
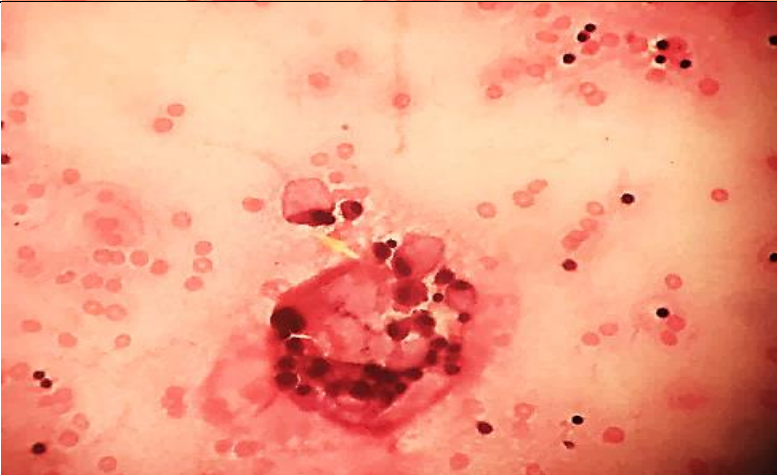
**Pleural fluid**

**Description:**

Cell balls and clusters of epithelial cells.

**Diagnosis: metastatic breast carcinoma**



<b>Case 53</b>	<b>Peritoneal fluid</b>	
<b>Description:</b> Isolated epithelial cells with signet ring pattern		
<b>Diagnosis: Signet ring carcinoma</b>		
		
		
		

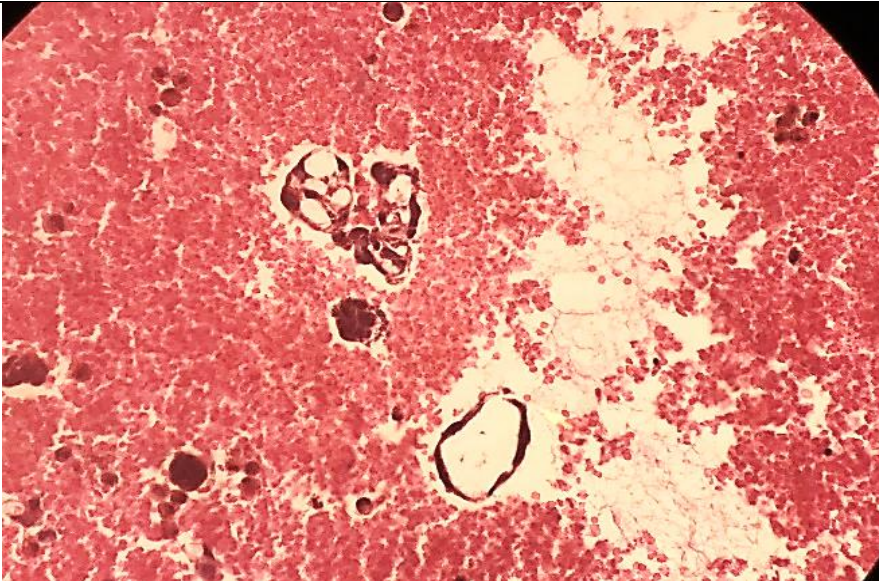
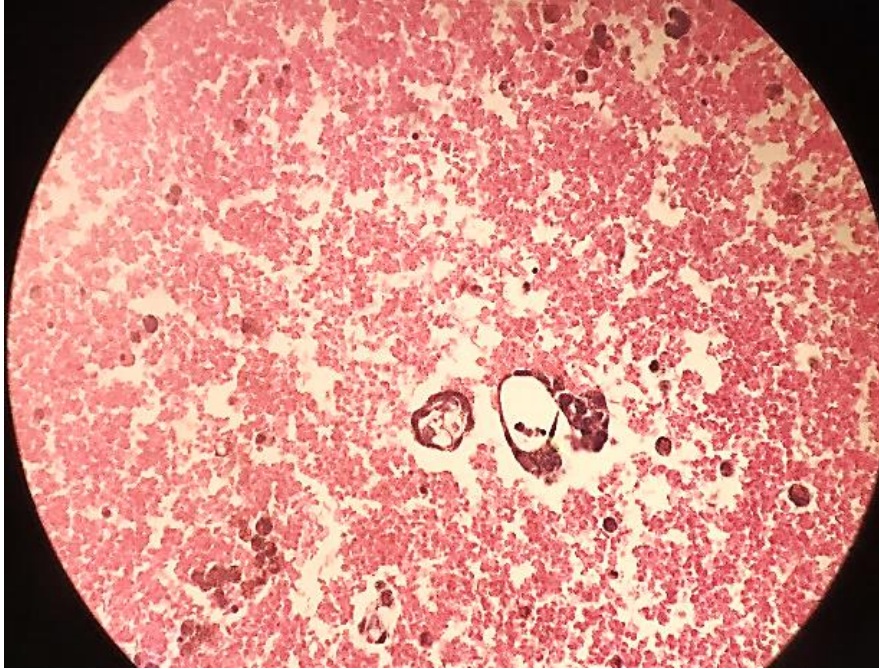
**Case 54**

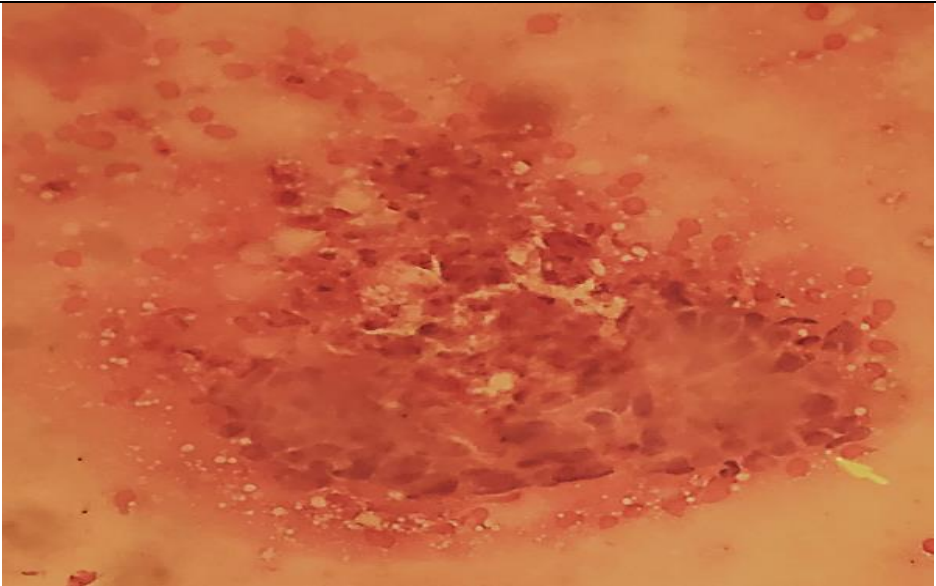
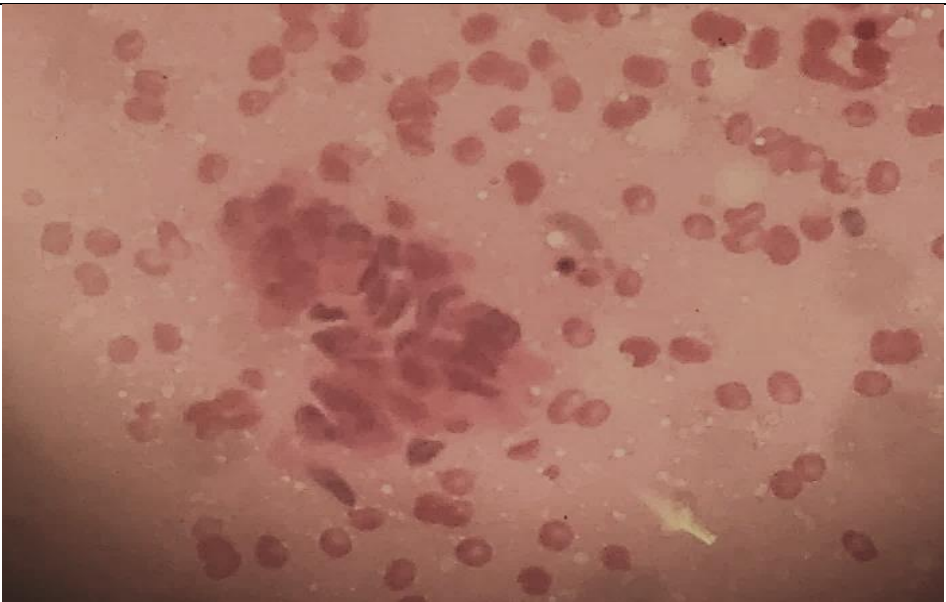
**Pericardial fluid /cell block**

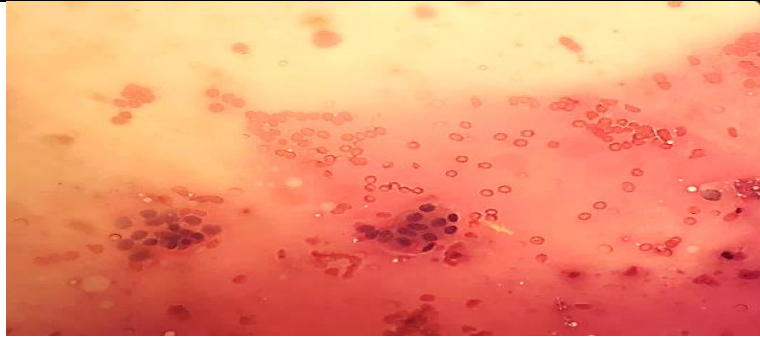
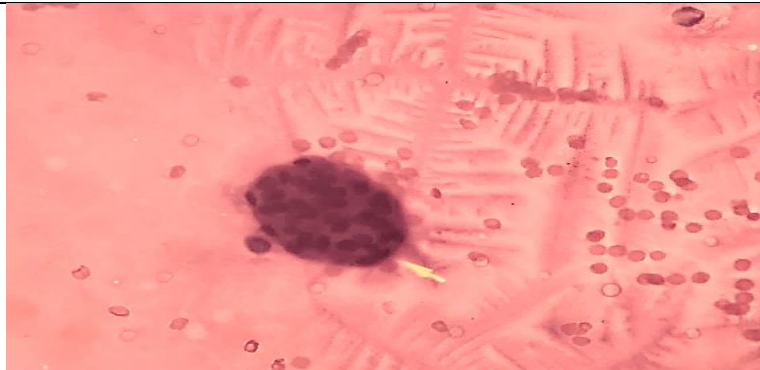
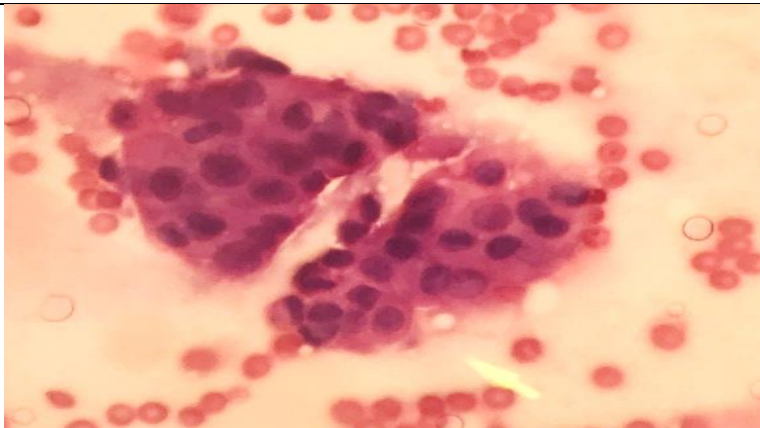
**Description:**


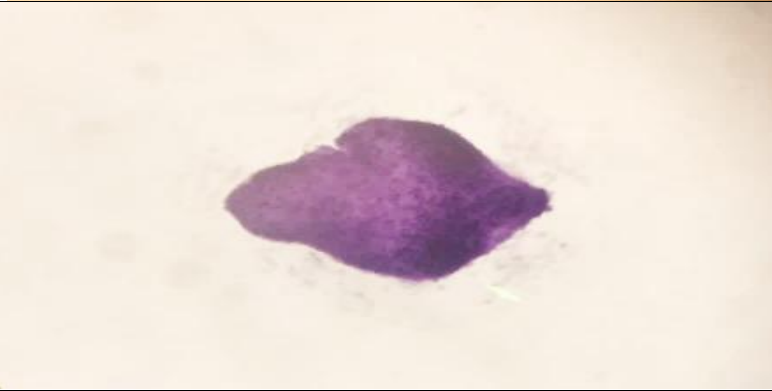
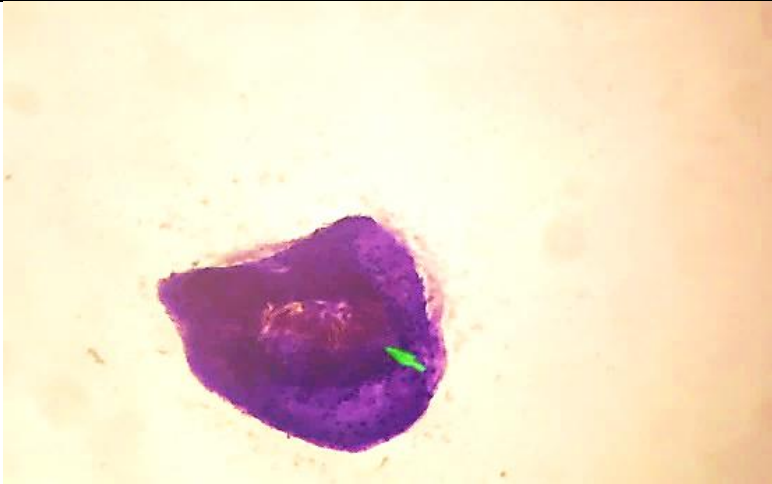
Hollow proliferation sphere/cell block

**Diagnosis: Metastatic adenocarcinoma**

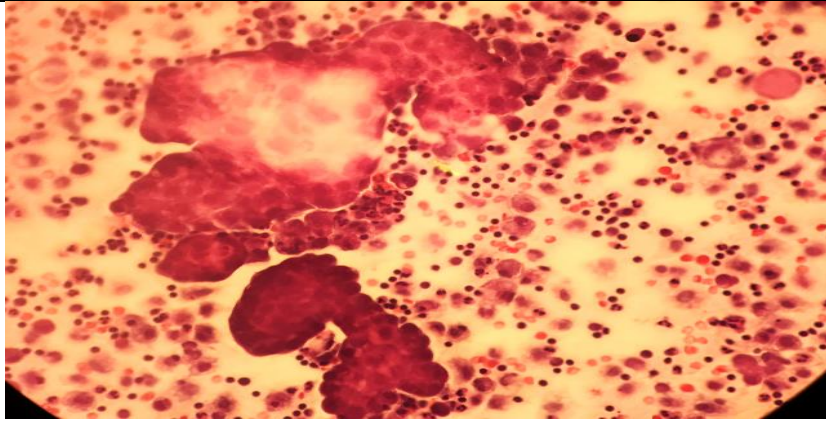
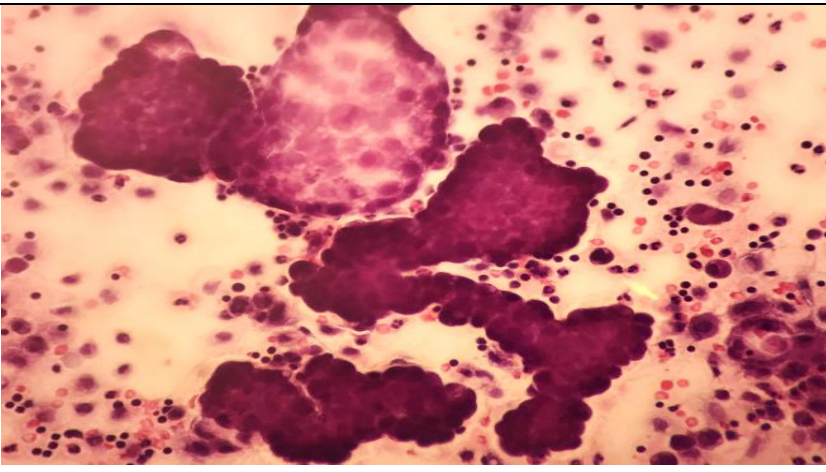
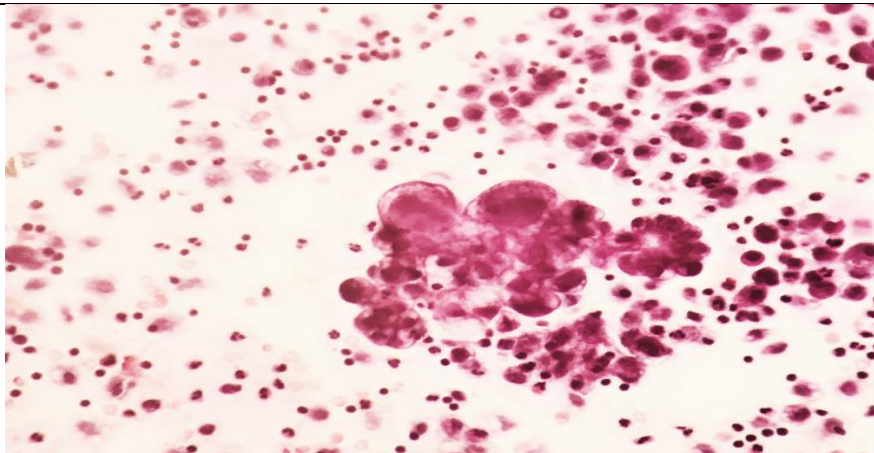


<b>Case 55</b>	<b>Peritoneal fluid</b>
<b>Description:</b> Clusters of columnar cells showing elongated, hyperchromatic nuclei	
<b>Diagnosis: Metastatic colon adenocarcinoma</b>	
	
	

<b>Case 56</b>	<b>Peritoneal fluid</b>	
<b>Description:</b> Mucinous background with cell balls and clusters of epithelial cells with mild nuclear atypia		
<b>Diagnosis: Metastatic mucinous carcinoma</b>		
		
		
		

<b>Case 57</b>	<b>Liver cyst</b>	
<b>Description:</b> Protoscolex contained hooklet		
<b>Diagnosis :Hydatid cyst</b>		
		
		
		



<b>Case 58</b>	<b>Peritoneal fluid</b>
<b>Description:</b> Cohesive clusters and papillary of medium to large cells with palisading along their periphery.	
<b>Diagnosis: Serous carcinoma</b>	
 This is a low-magnification photomicrograph of peritoneal fluid. It shows several large, cohesive clusters of cells. The cells are arranged in a papillary pattern, with their nuclei oriented towards the periphery of the clusters, creating a palisading appearance. The background is filled with numerous smaller, individual cells and some debris.	
 This is a medium-magnification photomicrograph of peritoneal fluid. It shows several large, cohesive clusters of cells. The cells are arranged in a papillary pattern, with their nuclei oriented towards the periphery of the clusters, creating a palisading appearance. The background is filled with numerous smaller, individual cells and some debris.	
 This is a high-magnification photomicrograph of peritoneal fluid. It shows a single, large, cohesive cluster of cells. The cells are arranged in a papillary pattern, with their nuclei oriented towards the periphery of the cluster, creating a palisading appearance. The background is filled with numerous smaller, individual cells and some debris.	

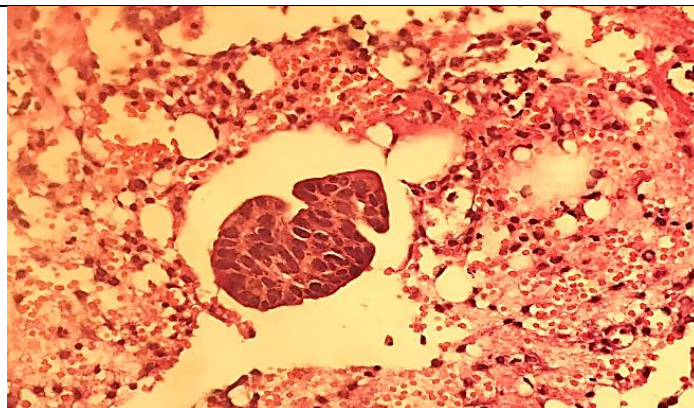
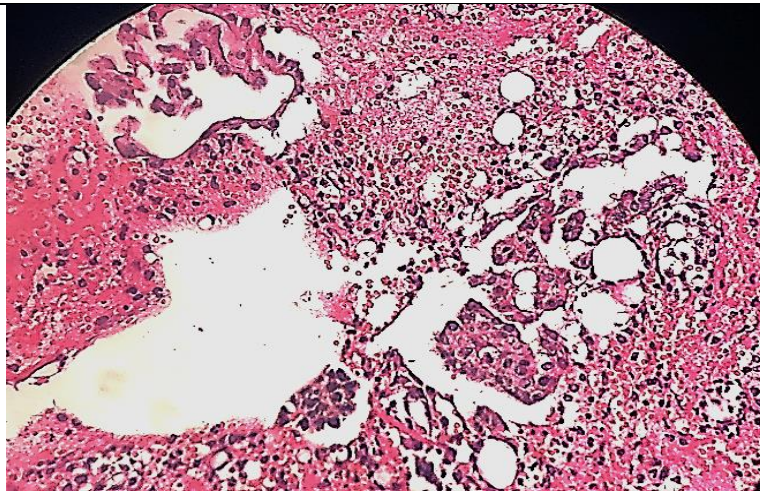
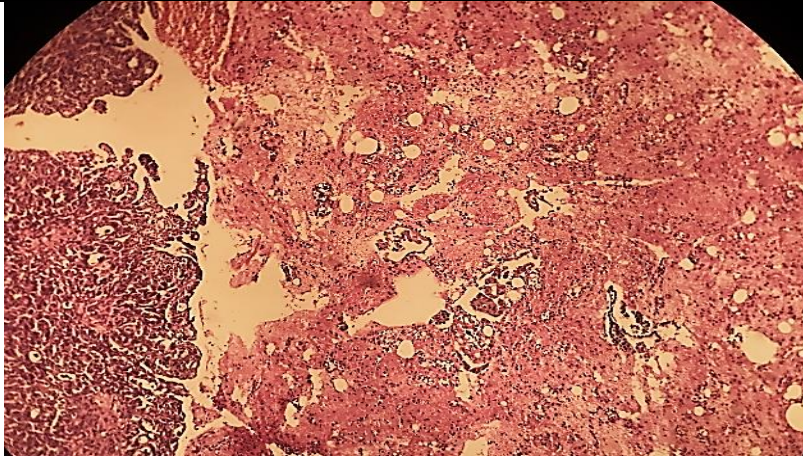
**Case 59**

**Peritoneal washing fluid/cell block**

**Description:**

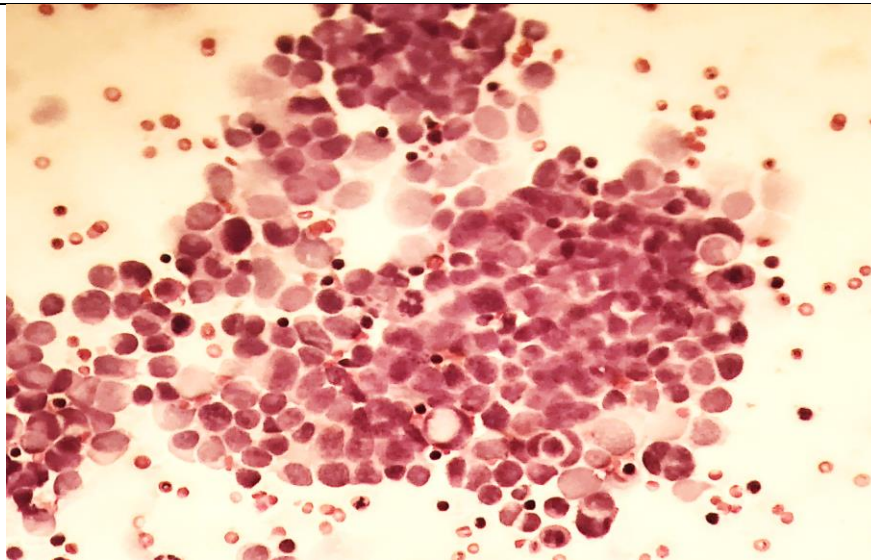
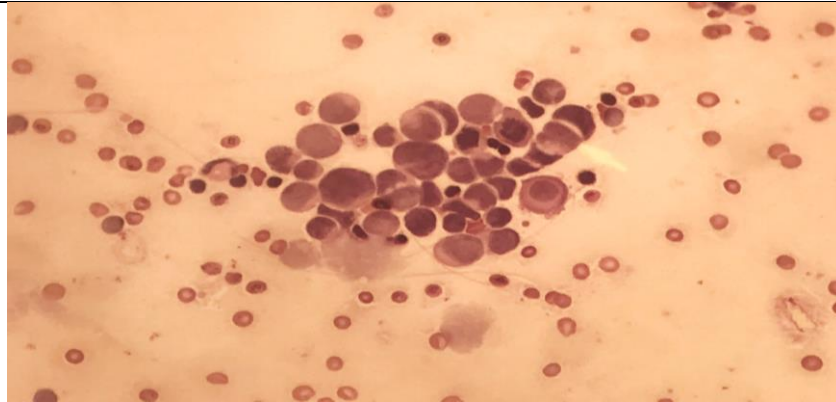
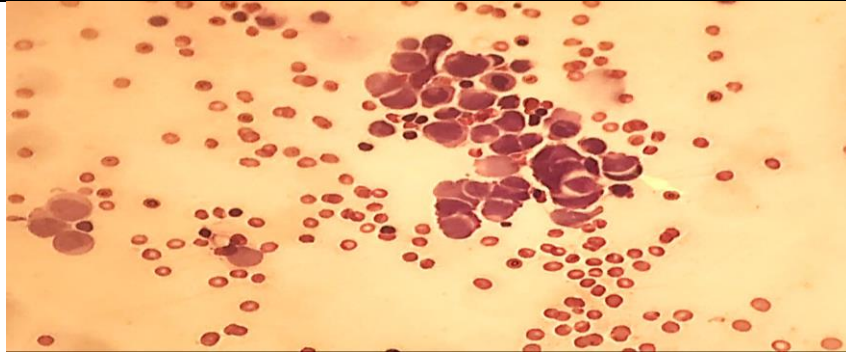
Mesothelial cells strips and clusters of epithelial cells with mild nuclear atypia

**Diagnosis: Serous carcinoma**



**Case 60****pleural fluid 60 year old man****Description:**

Clusters of loosely cohesive small cells with nuclear molding, cells have little cytoplasm and high N/C ratio and hyperchromasia

**Diagnosis: small cell carcinoma**

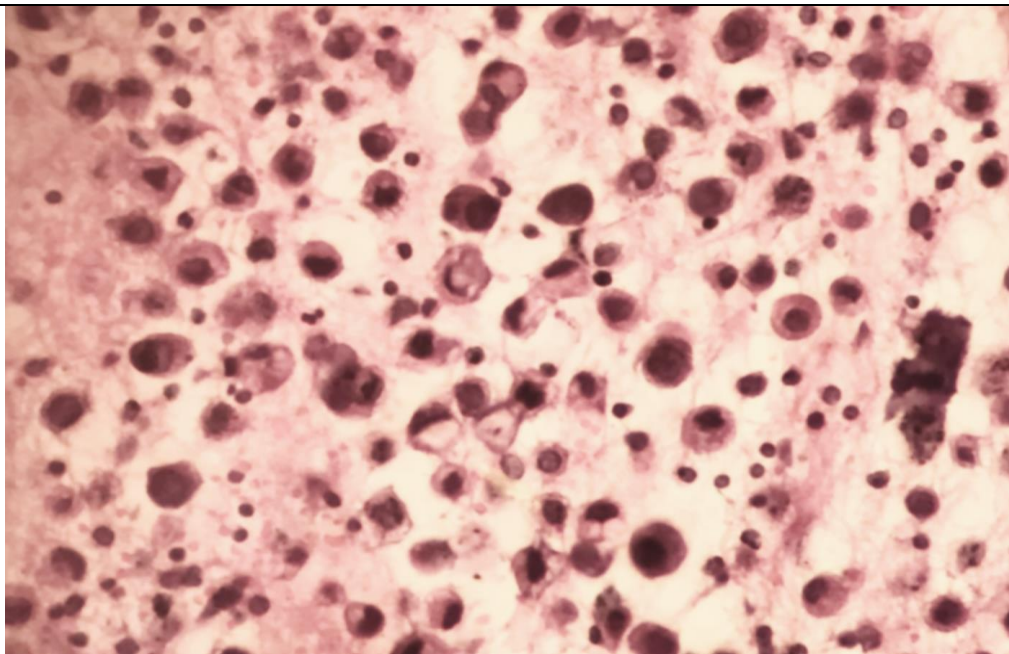
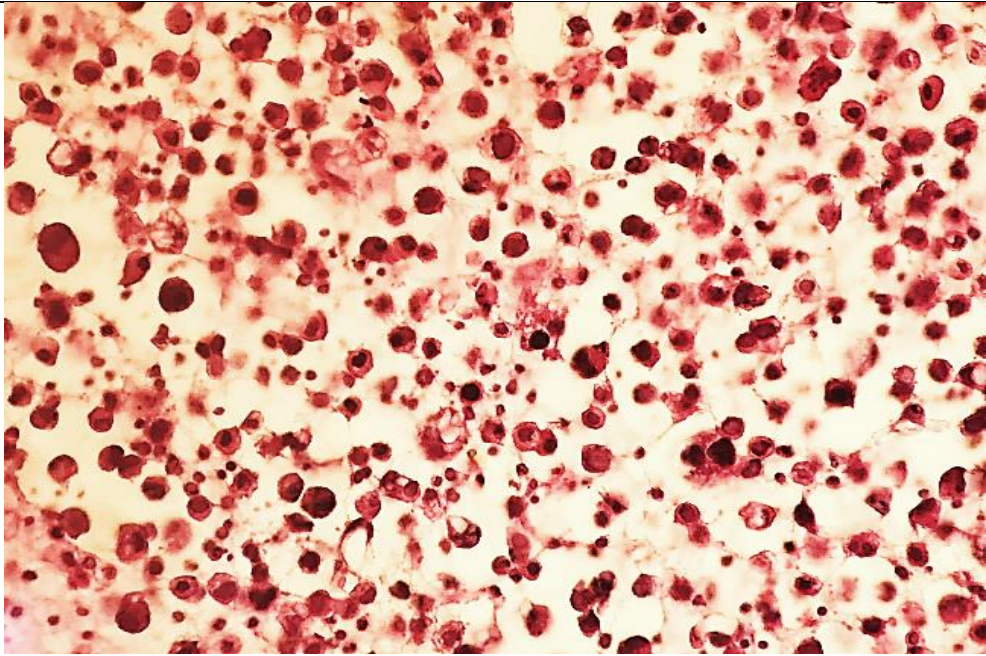
**Case 61**

**pleural fluid cell block from 50 year old lady**

**Description:**

Single isolated cells with occasional signet ring pattern

**Diagnosis:metastatic lobular carcinoma**



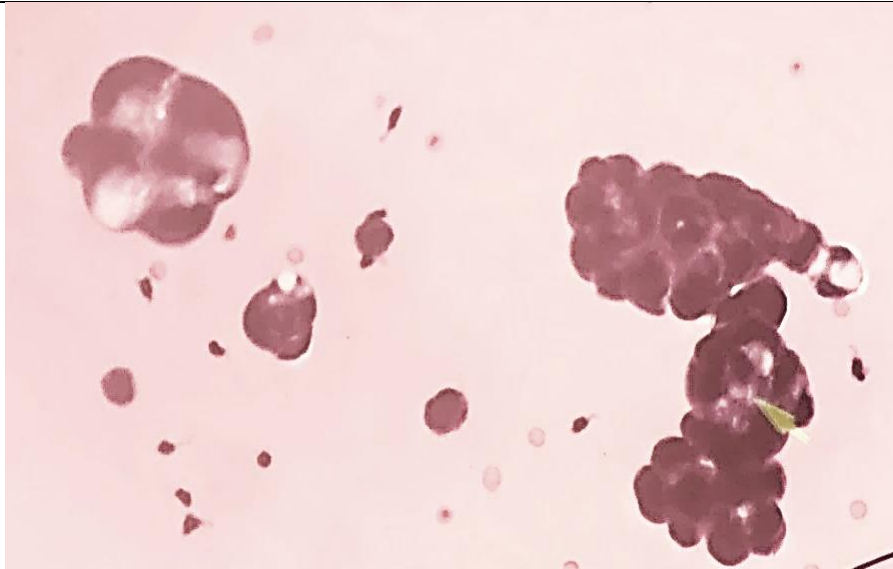
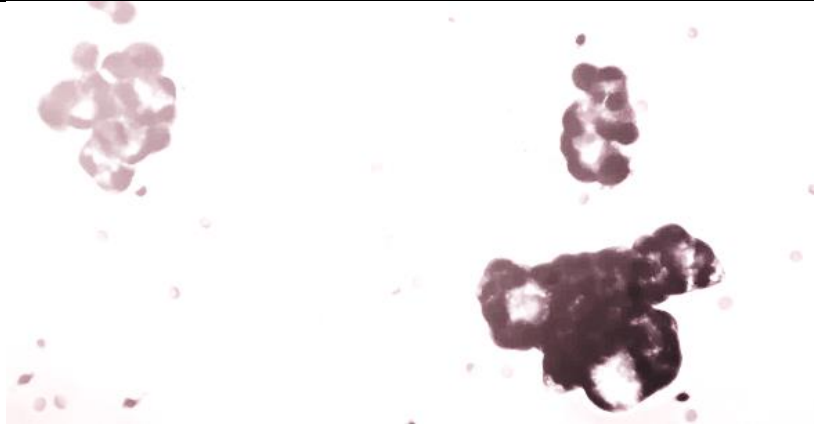
**Case 62**

**pleural fluid from 60 year old lady**

**Description:**

Three dimensional cells clusters with nuclear atypia and hyperchromasia and occasional vacuolated cytoplasm

**Diagnosis:adenocarcinoma**



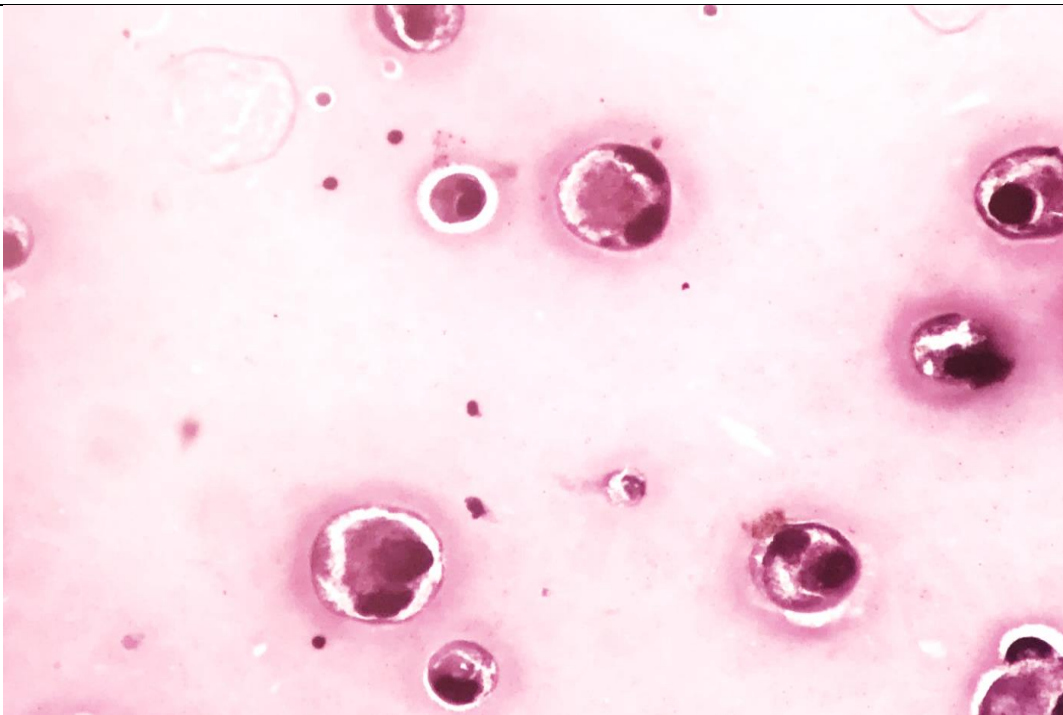
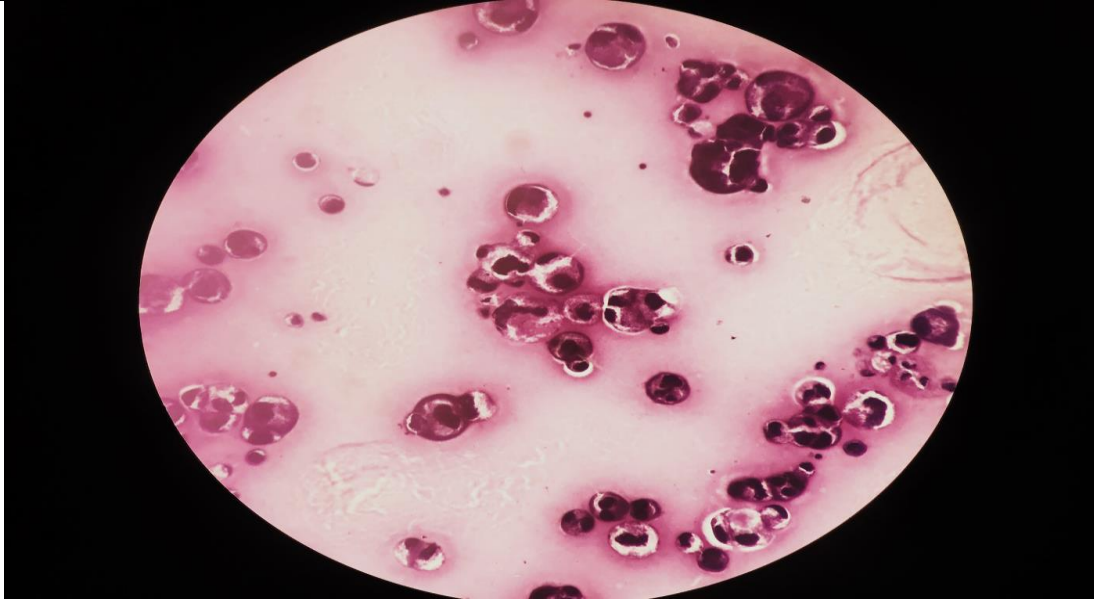
**Case 63**

pleural fluid from 40 year old man

**Description:**

Isolated epithelial cells with signet ring feature

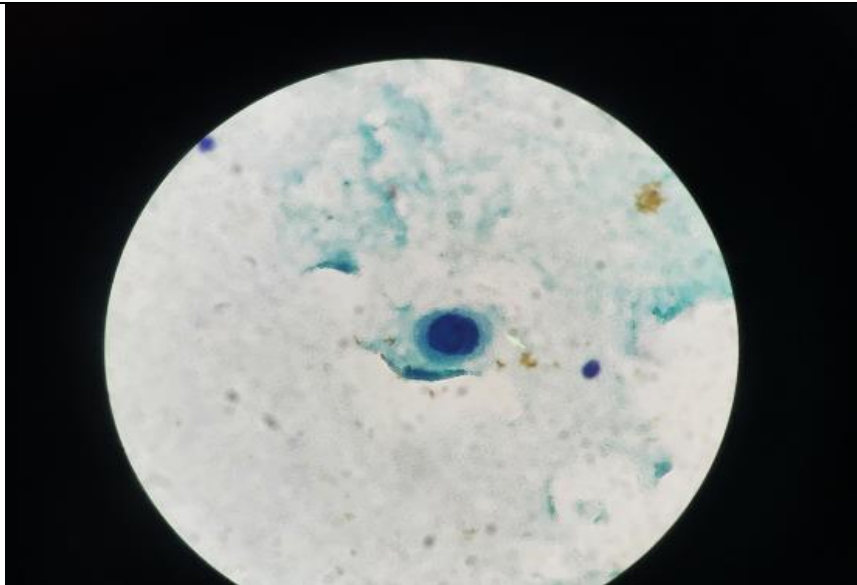
**Diagnosis:metastatic signet ring carcinoma**



<b>Case 64</b>	<b>pleural fluid</b>
----------------	----------------------

<b>Description:</b> A few atypical cells
---

<b>Diagnosis: atypical</b>
----------------------------



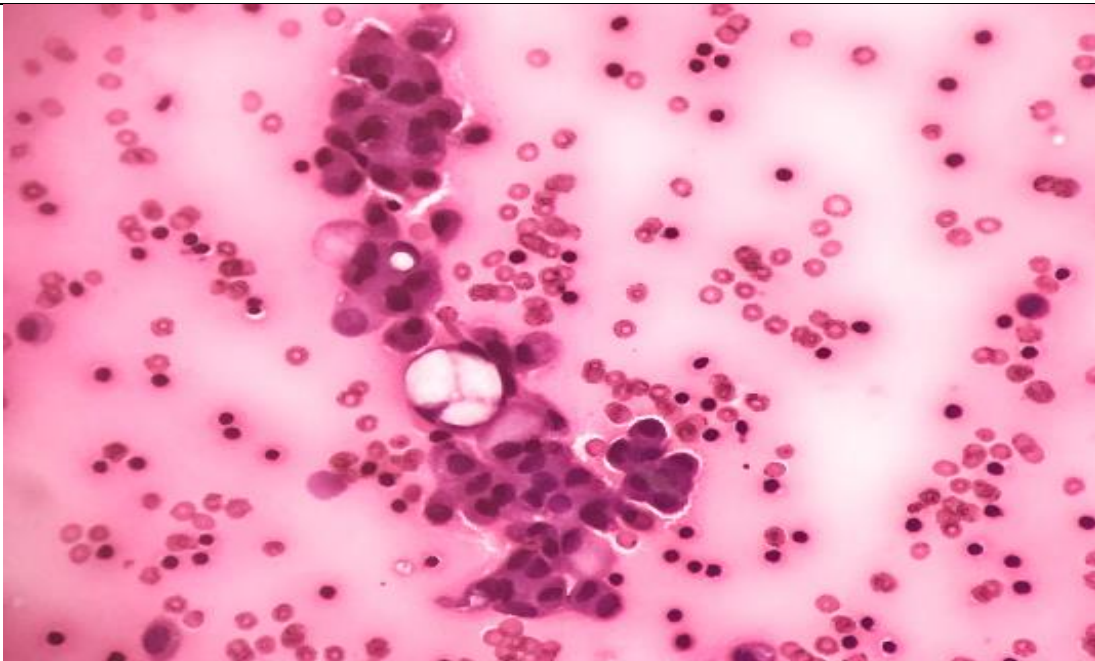
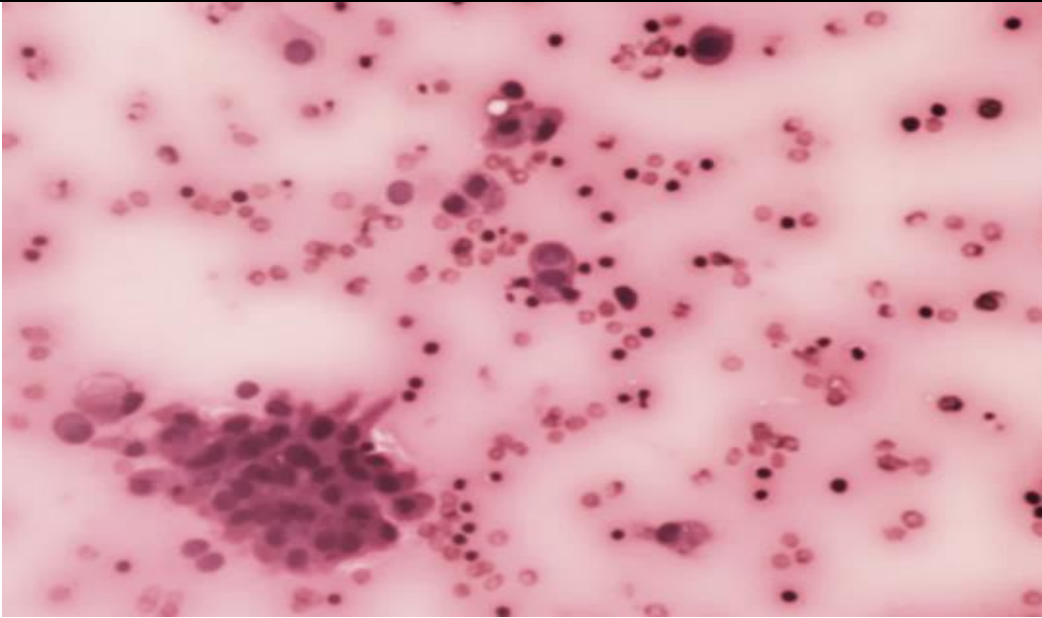
**Case 65**

**pleural fluid**

**Description:**

Mesothelial cells groups and sheets.

**Diagnosis:mesothelial cells**





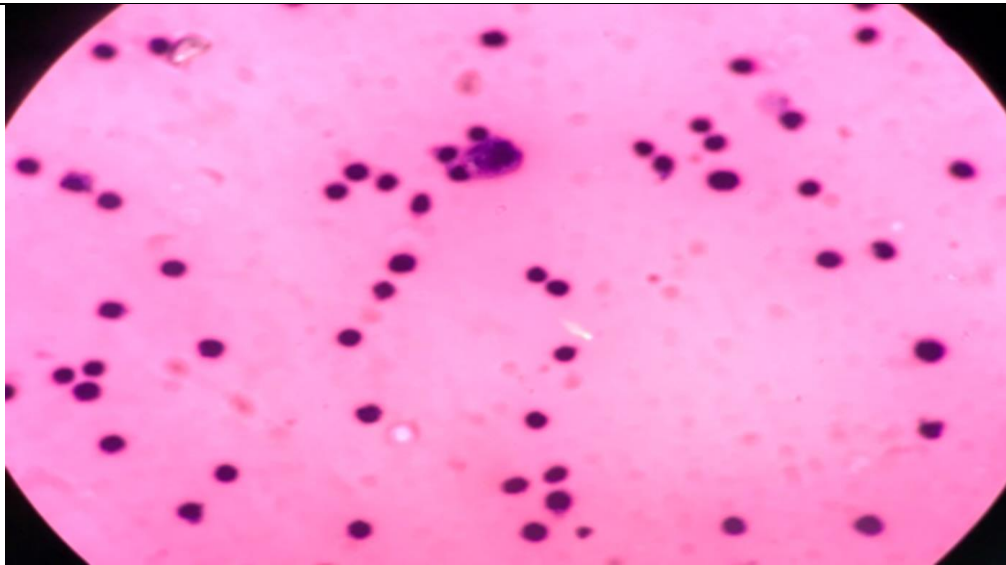
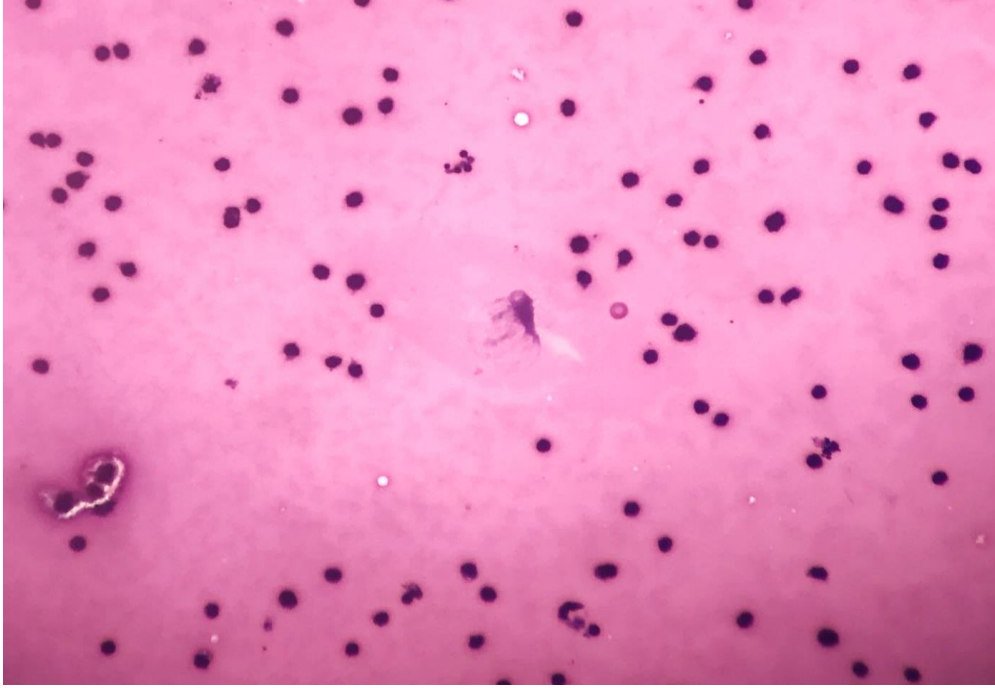
**Case 66**

**pleural fluid from 65 year old man**

**Description:**

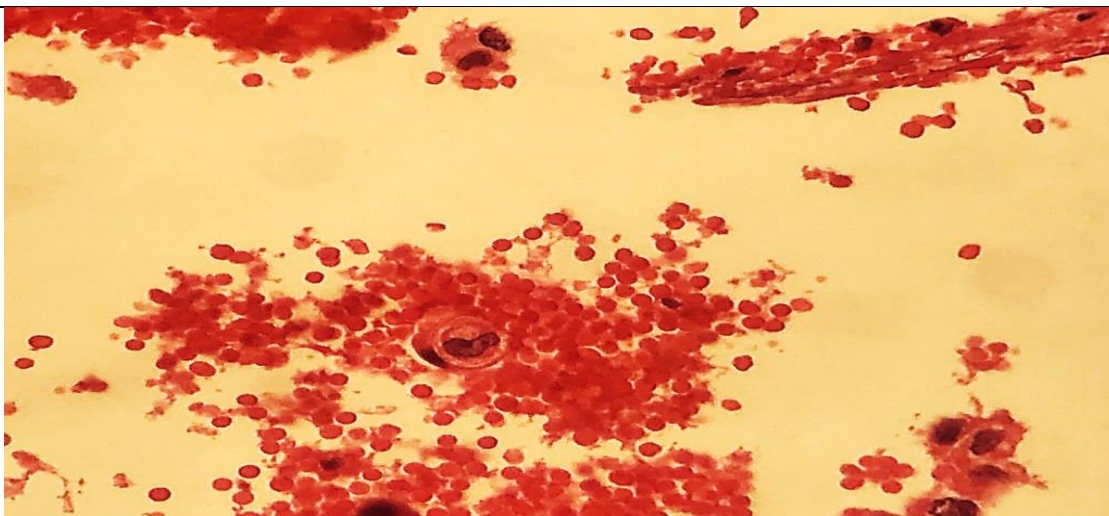
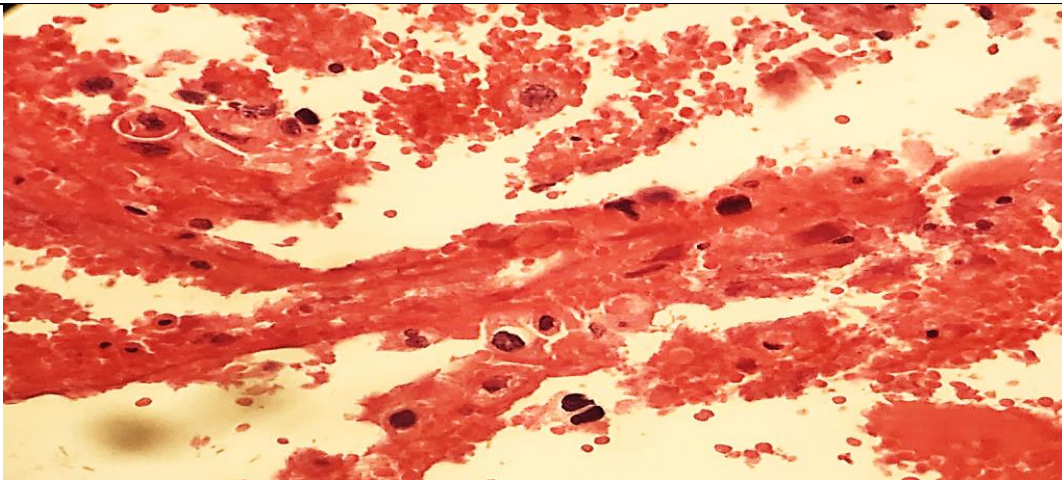
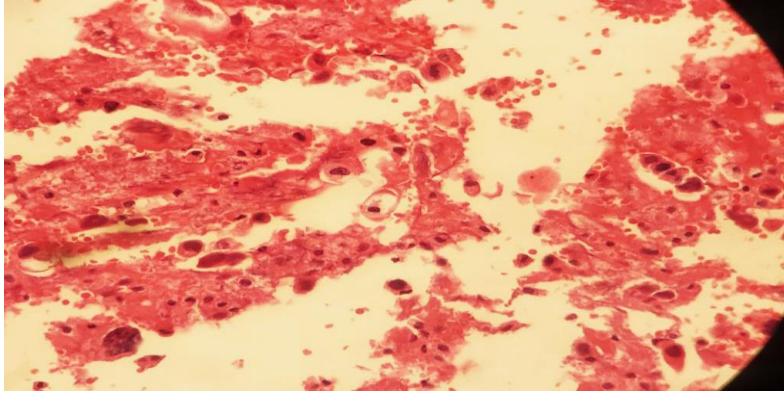
Mature lymphocytes infiltrate

**Diagnosis: Lymphocytic pleuritic/CLL**



**Case 67****Pericardial fluid cell block/ Known case of lung SCC****Description:**

Isolated epithelial cells contained orangophilic cytoplasm and hyperchroma (india ink) nuclei. cannibalism is noted.

**Diagnosis :metastatic SCC**

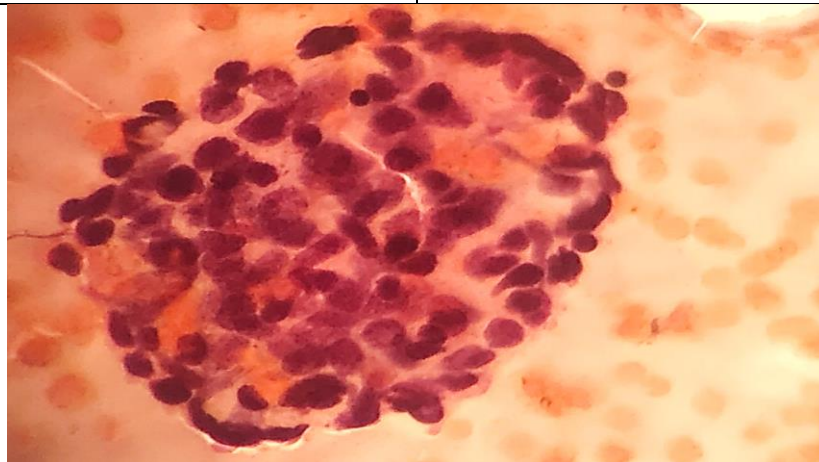
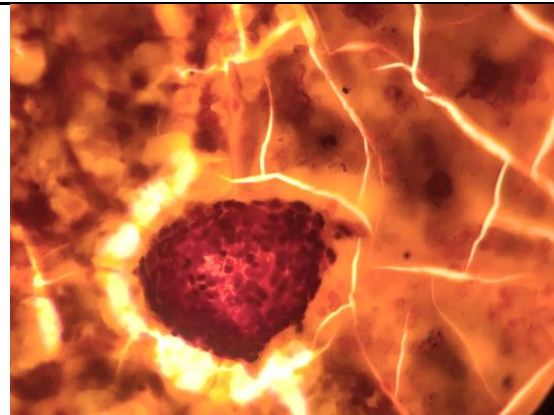
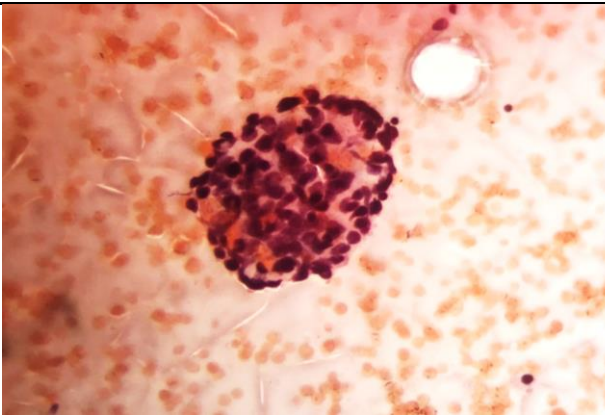
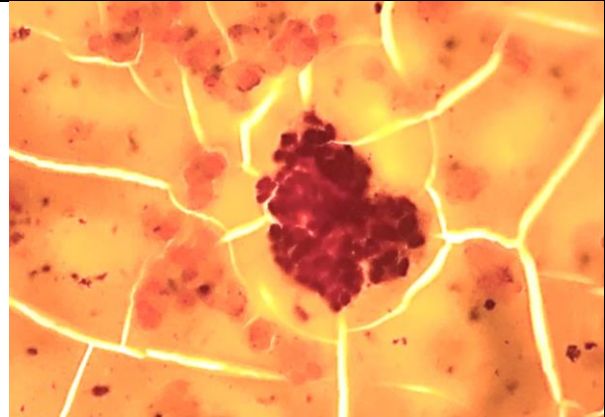
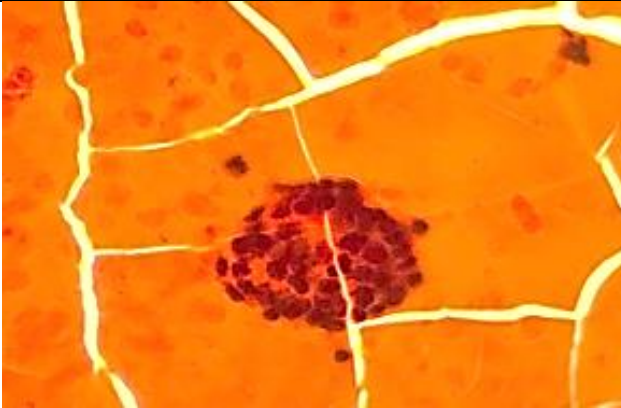
**Case 68**

**Peritoneal fluid from 4 year old girl**

**Description:**

Uniform ,small cells with hyperchromatic nuclei and scant cytoplasm

**Diagnosis: Neuroblastoma**



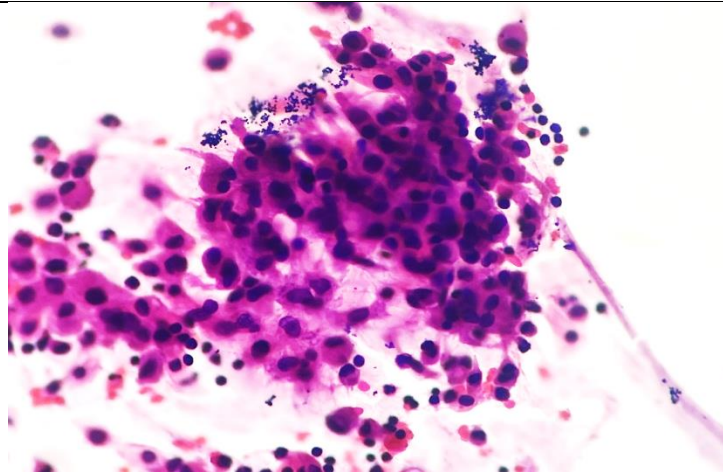
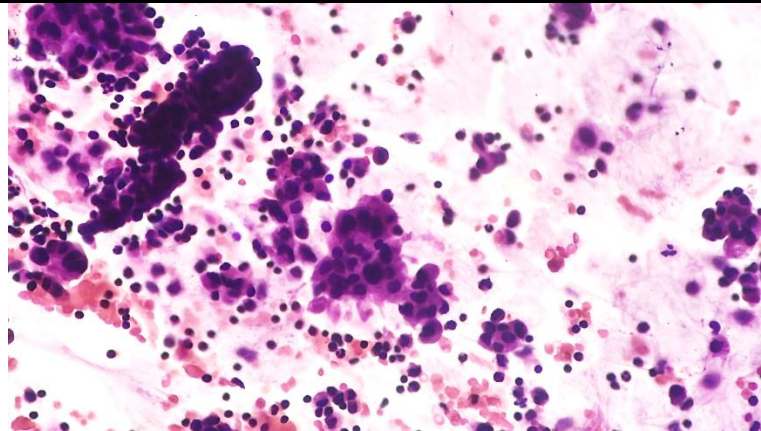
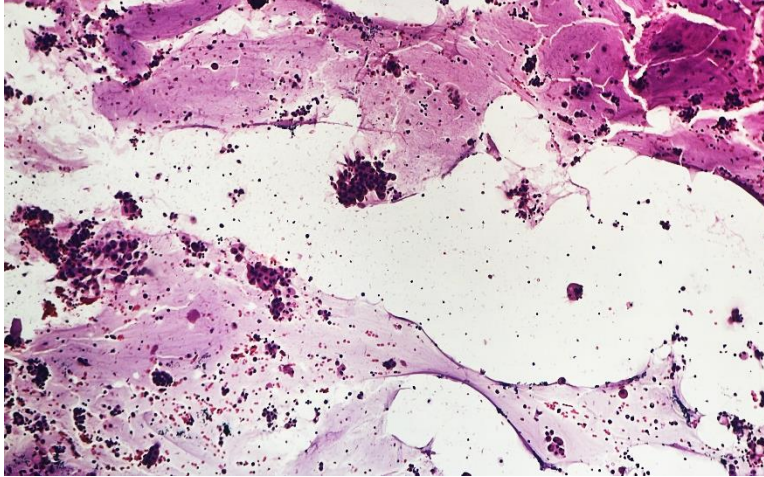
**Case 69**

**Peritoneal fluid from 70 year old woman**

**Description:**

Background mucin with clusters and sheets of neoplastic epithelial cells

**Diagnosis: Mucinous carcinoma**

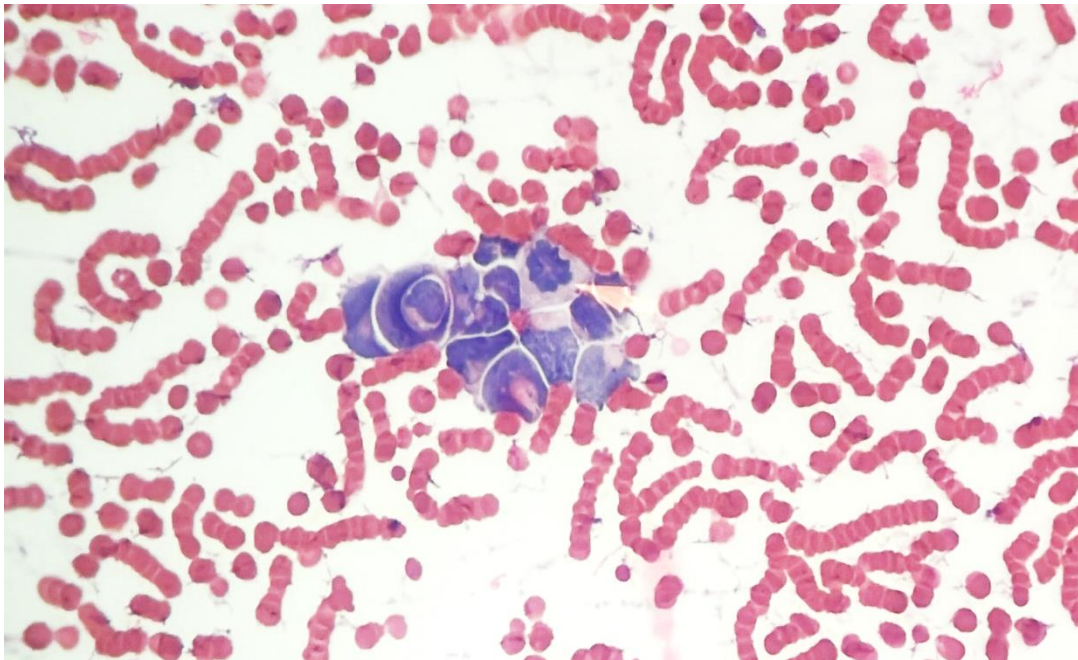
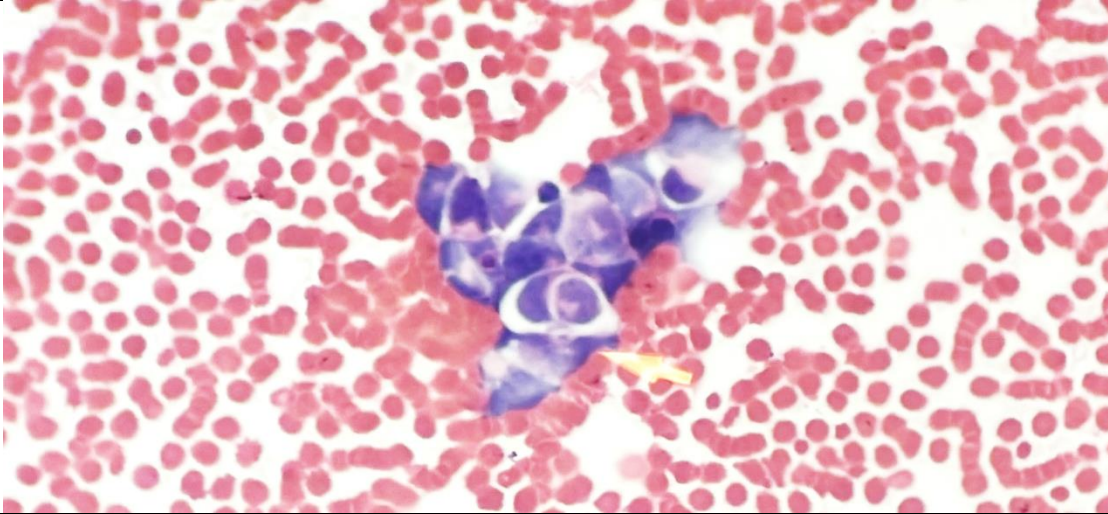


**Case 70**

**Pleural fluid from 67 year old man**

Description: Neoplastic small cells with high N/C ratio and nuclear hyperchromasia and nuclear molding and mitosis

**Diagnosis :Small cell carcinoma**

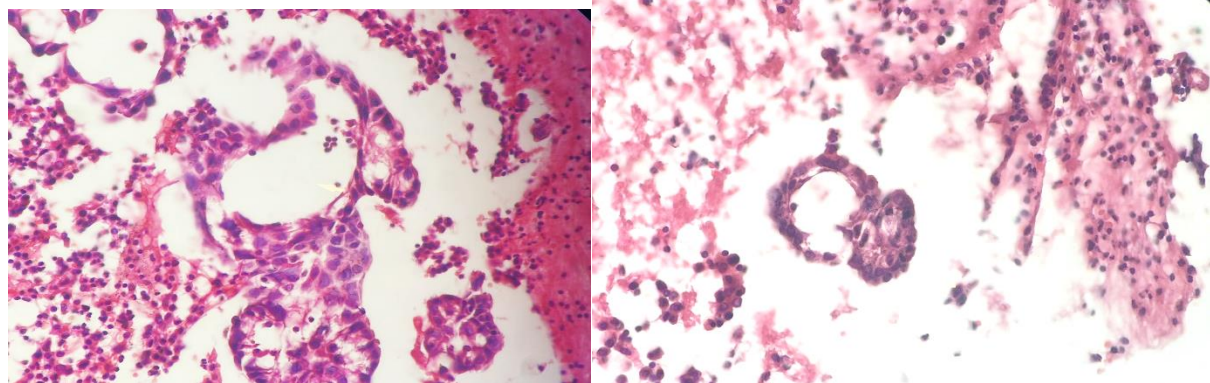
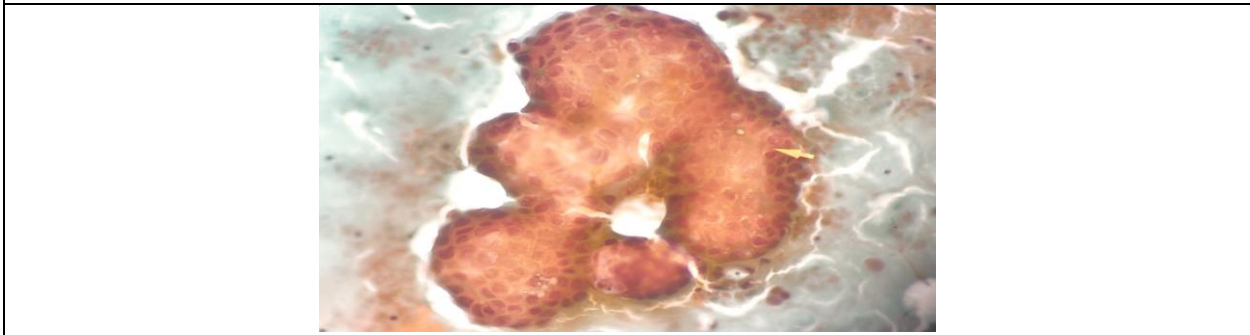
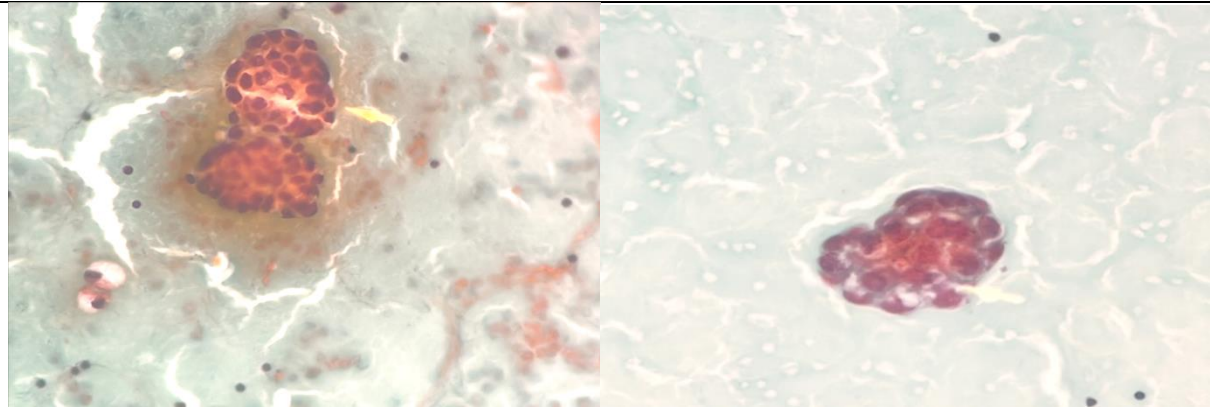


**Case 71(A,B)**

**Peritoneal fluid from 55 year old woman  
Smear and cell block**

**Description:** Neoplastic epithelial cells forming papilla and clusters cells with high N/C ratio and nuclear hyperchromasia and mild nuclear atypia  
Cell block shows tubulopapillary structures.

**Diagnosis :Metastatic serous carcinoma/in favor ovarian origin**

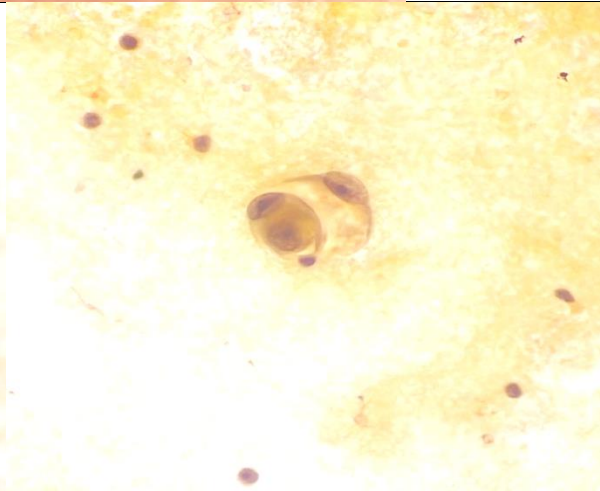
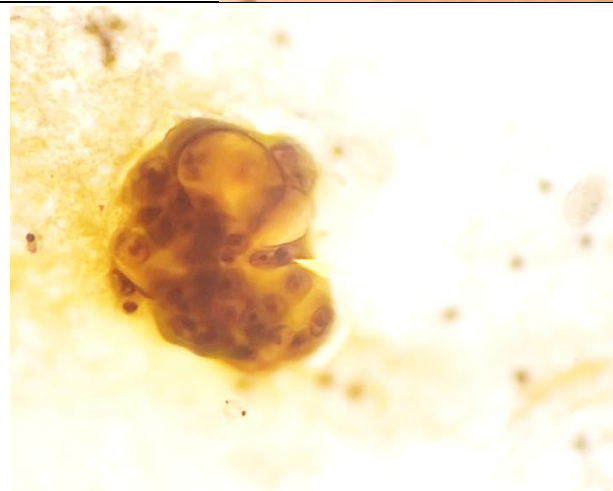
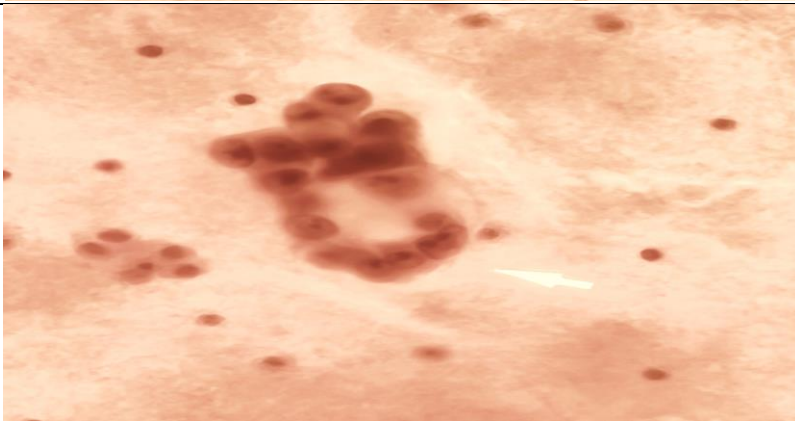
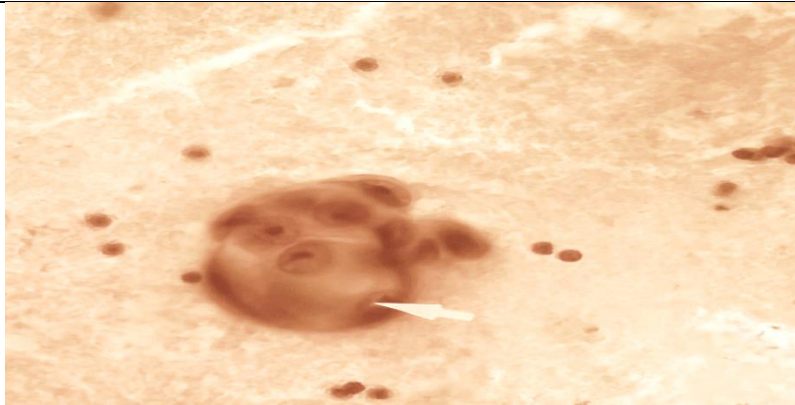


**Case 72**

**Pleural fluid from 50 year old woman**

**Description:** Neoplastic epithelial cells with vesicular nuclei and prominent nucleoli and occasional vacuolated cytoplasm formin clusters,acini and cell cannibalism is noted.

**Diagnosis :Bronchogenic adenocarcinoma**



<b>Case 73</b>	<b>Pleural fluid from 45 year old man Known case of gastric carcinoma</b>
Description: Neoplastic isolated cells that some of them are mesothelial cells looking, occasional signet ring cells with suspicious feature for malignancy are noted.	
<b>Diagnosis :Suspicious for malignancy</b>	
