



CASE PRESENTATION

MENTORED BY:

DR DERAKHSHAN

PRESENTED BY:

AREFE KADKHODAEI

CASE 1



Female 40 year
old with scalp and
facial lesion



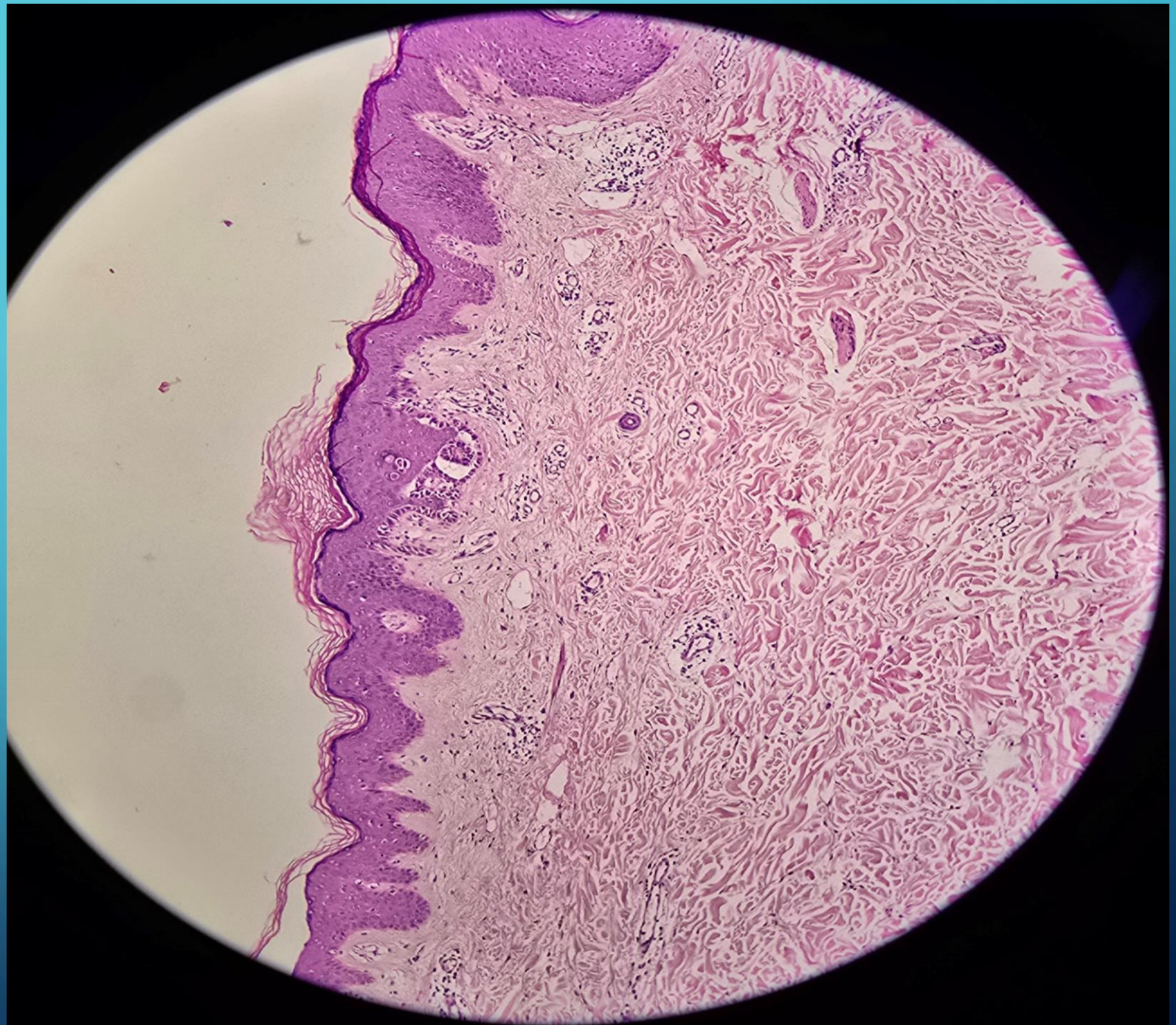
MACROSCOPIC DESCRIPTION

- Received specimen in formalin consist one soft tan pieces measuring 0.8 *0.5 *0.3 cm, covered by skin in one side ,totally submitted one block.

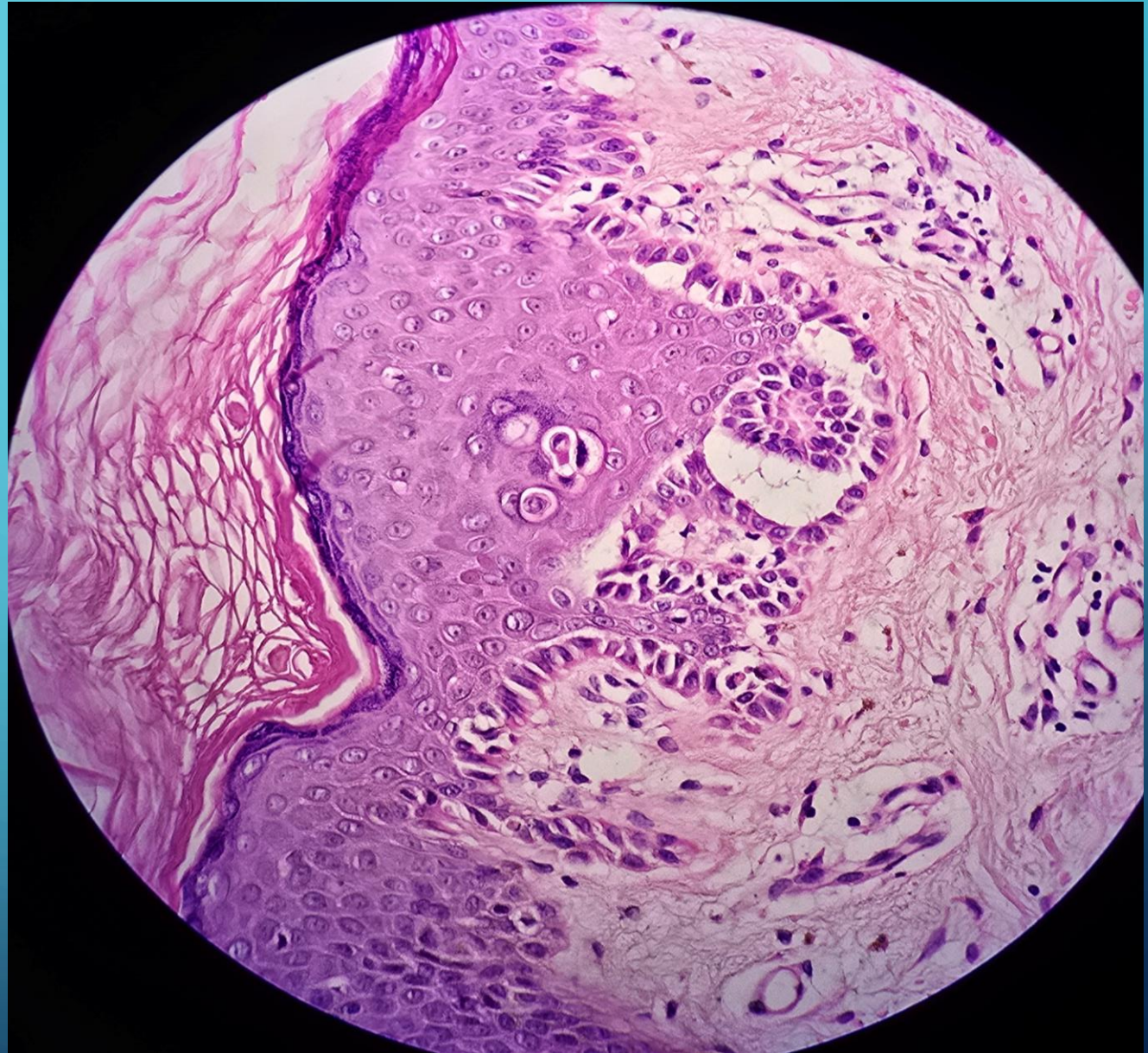
DIFFERENTIAL DIAGNOSIS

- Psoriasis
- Eczema
- Epidermodysplasia verruciformis
- Acrokeratosis of HOPF
- Darrier

MICROSCOPY:



MICROSCOPY:



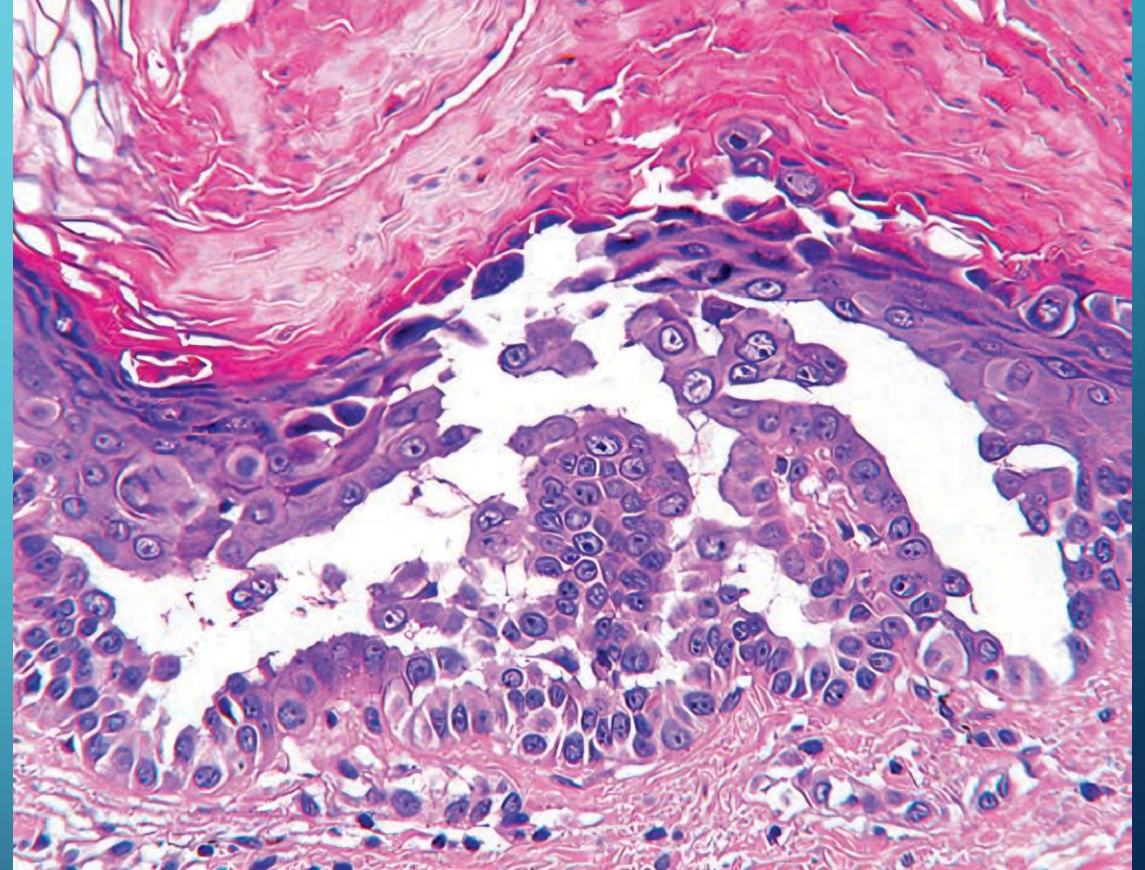
DX:

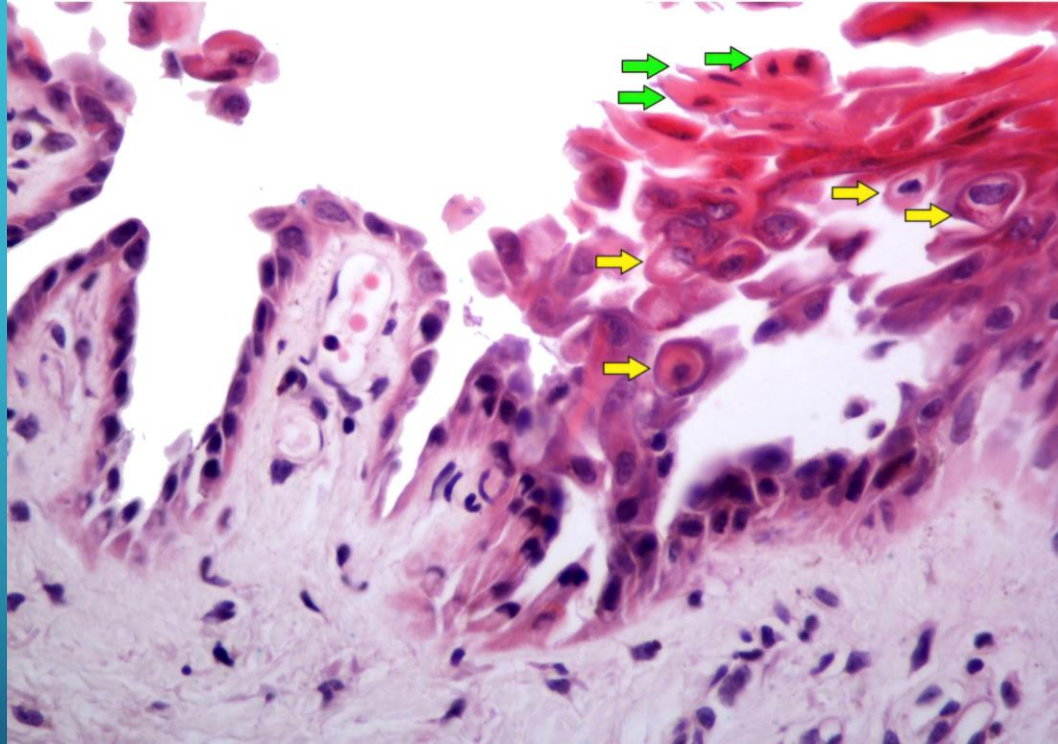
Darier disease

DARIER DISEASE

Darier disease has bullous features, it is not an autoimmune inflammatory bullous dermatosis. Darier disease is an uncommon genodermatosis caused by germline mutation of the *ATP2A2* gene. It usually presents with a symmetrical distribution of keratotic reddish-brown papules over the seborrheic areas of the body. Unilateral and localized variants have been described.

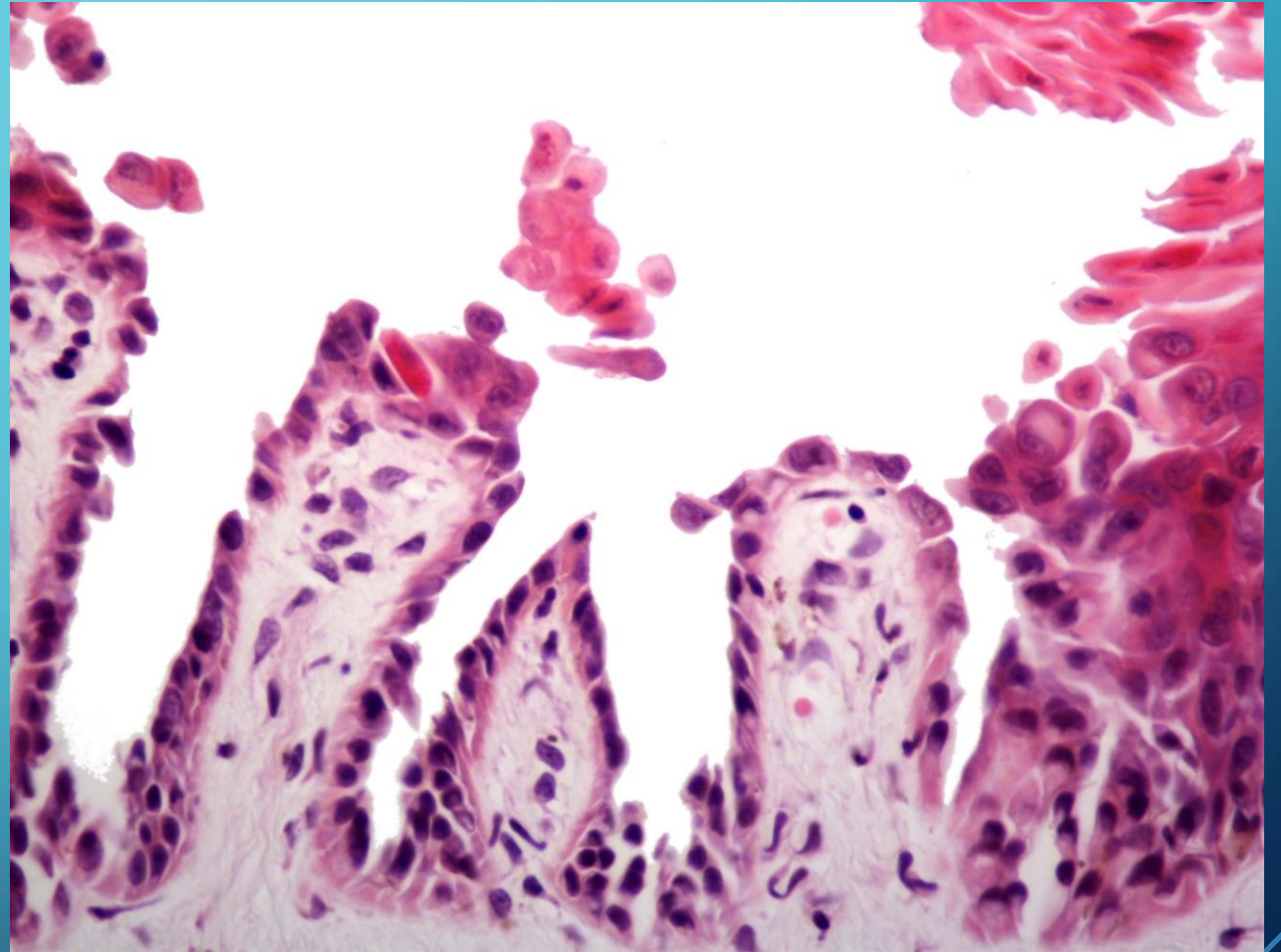
Microscopically, the skin lesions are characterized by suprabasal acantholysis and suprabasal clefts in which acantholytic cells called grains are found. The dermal papillae covered by a layer of basal cells form small villi at the base of the lesion.





In addition, within the epidermis, large individually dyskeratotic cells called corps ronds are found. When the lesions are closely spaced, the skin assumes a verrucous appearance. The back is the most common site of involvement.

The oral mucosa and hairless skin may be involved, showing that the disease is not limited to the hair follicle, as suggested by the synonym keratosis follicularis.



HISTOPATHOLOGIC FEATURES

- 1. Suprabasal acantholysis
- Cleft formation just above the basal layer
- 2. Dyskeratosis
 - Corps ronds: round, eosinophilic dyskeratotic cells with a clear halo
 - Grains: small, dark, flattened dyskeratotic cells in the stratum corneum
- 3. Hyperkeratosis
- 4. Acanthosis
- 5. Papillomatosis
- 6. Mild superficial dermal inflammation

DDX:

- **Hailey-Hailey disease:**

suprabasal and intraepithelial acantholysis

Corps ronds and grains are rare

Epidermal hyperplasia and parakeratotic crust may contain neutrophils and bacteria

- **Pemphigus vulgaris:**

Suprabasal and intraspinous acantholysis without corp rond and grain formation

Intraepidermal, intercellular deposition of IgG/C3

- **Warty dyskeratosis:**

Identical Darier type acantholytic dyskeratosis but solitary lesion

Tends to have distinct cup shaped epidermal invagination and very prominent villus formation

- **Acantholytic dyskeratotic acanthoma:**

Darier or pemphigus type acantholytic dyskeratosis but solitary papule or nodule

May be seen in normal skin or adjacent to a variety of benign or malignant tumors

CASE 2

- Female 48 year old with inguinal lesion (1402)



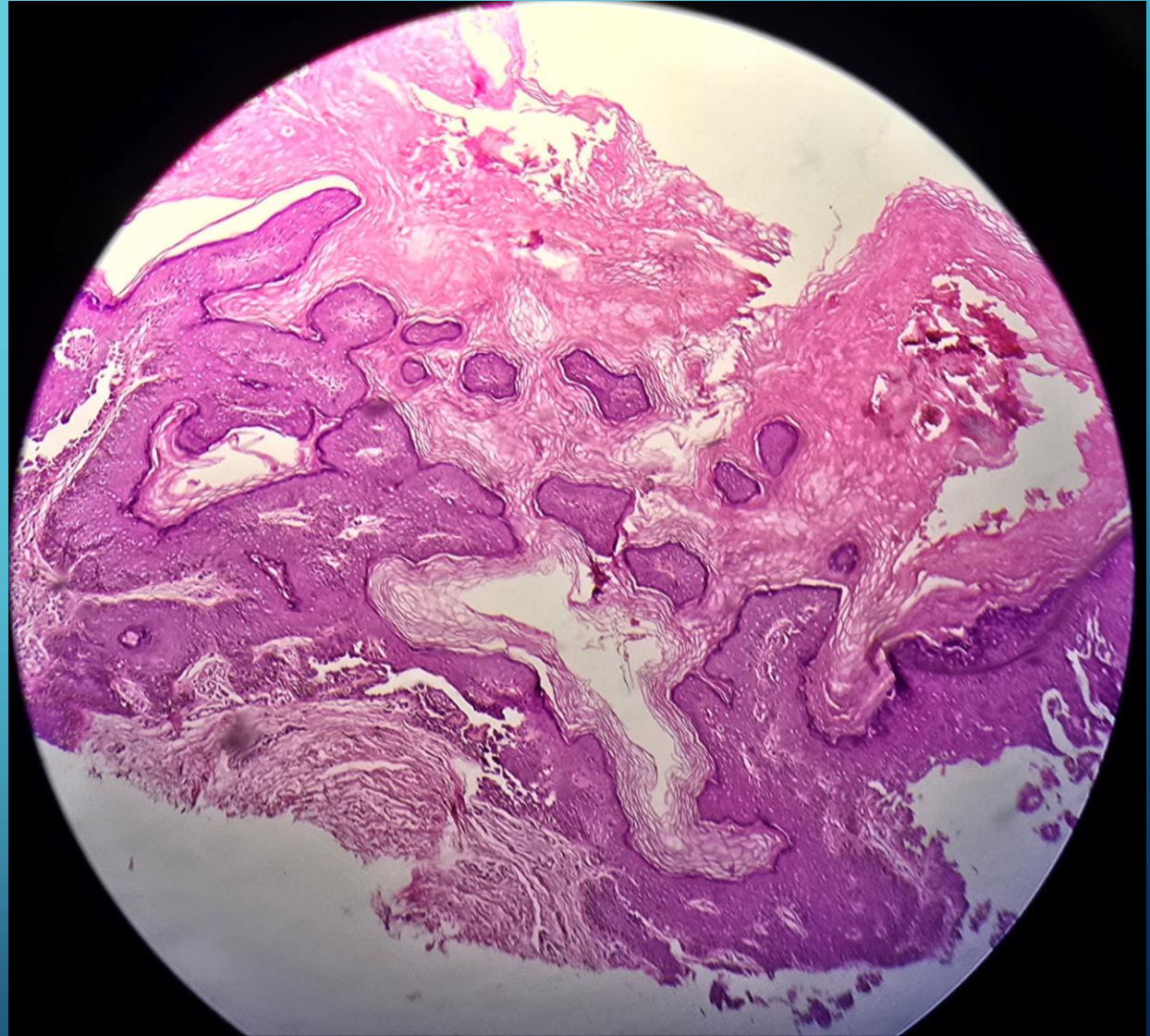
MACROSCOPIC DESCRIPTION

- Received specimen in formalin consist one soft tan pieces measuring 0.5 *0.3 *0.3 cm, covered by skin in one side ,totally submitted one block.

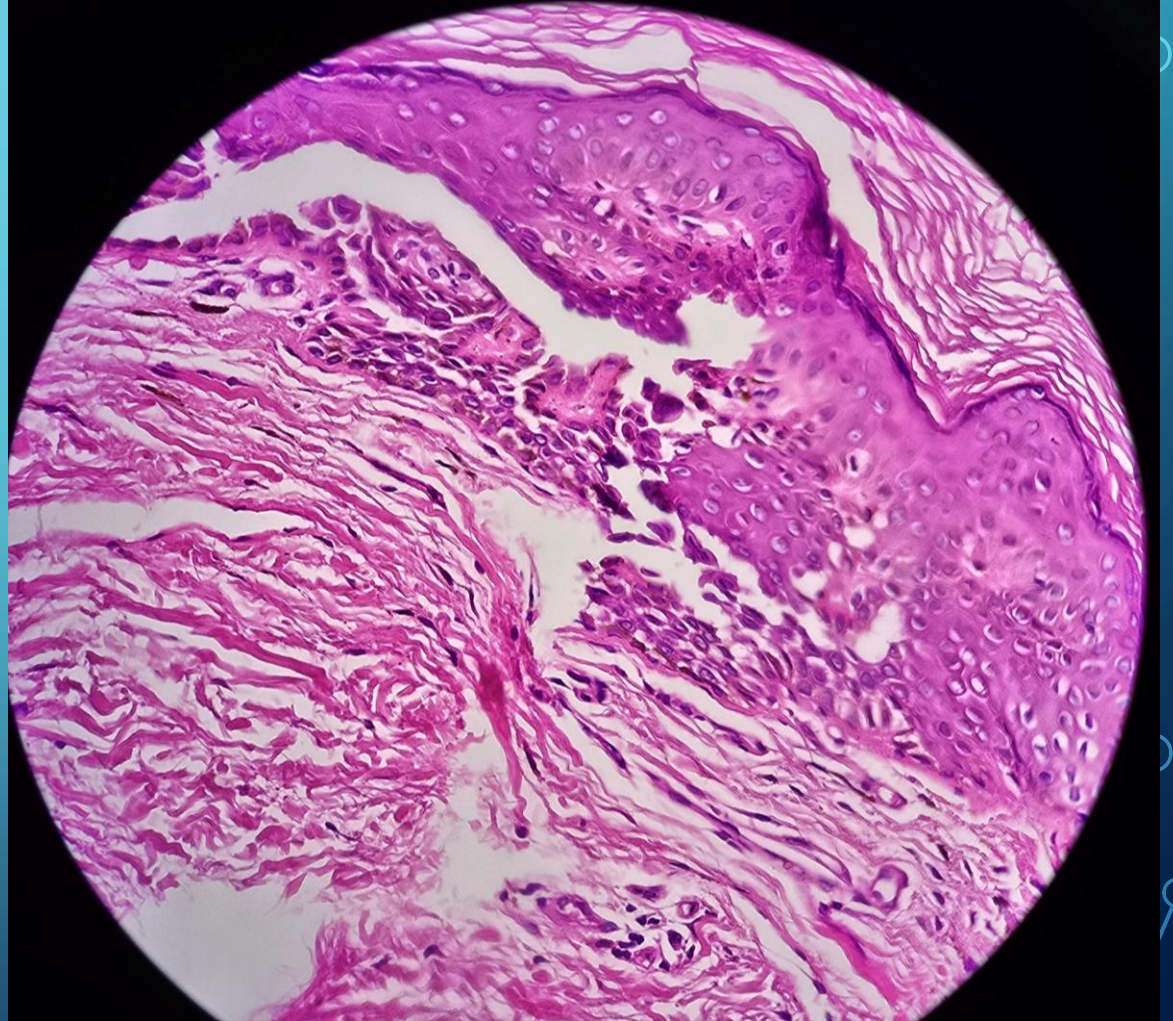
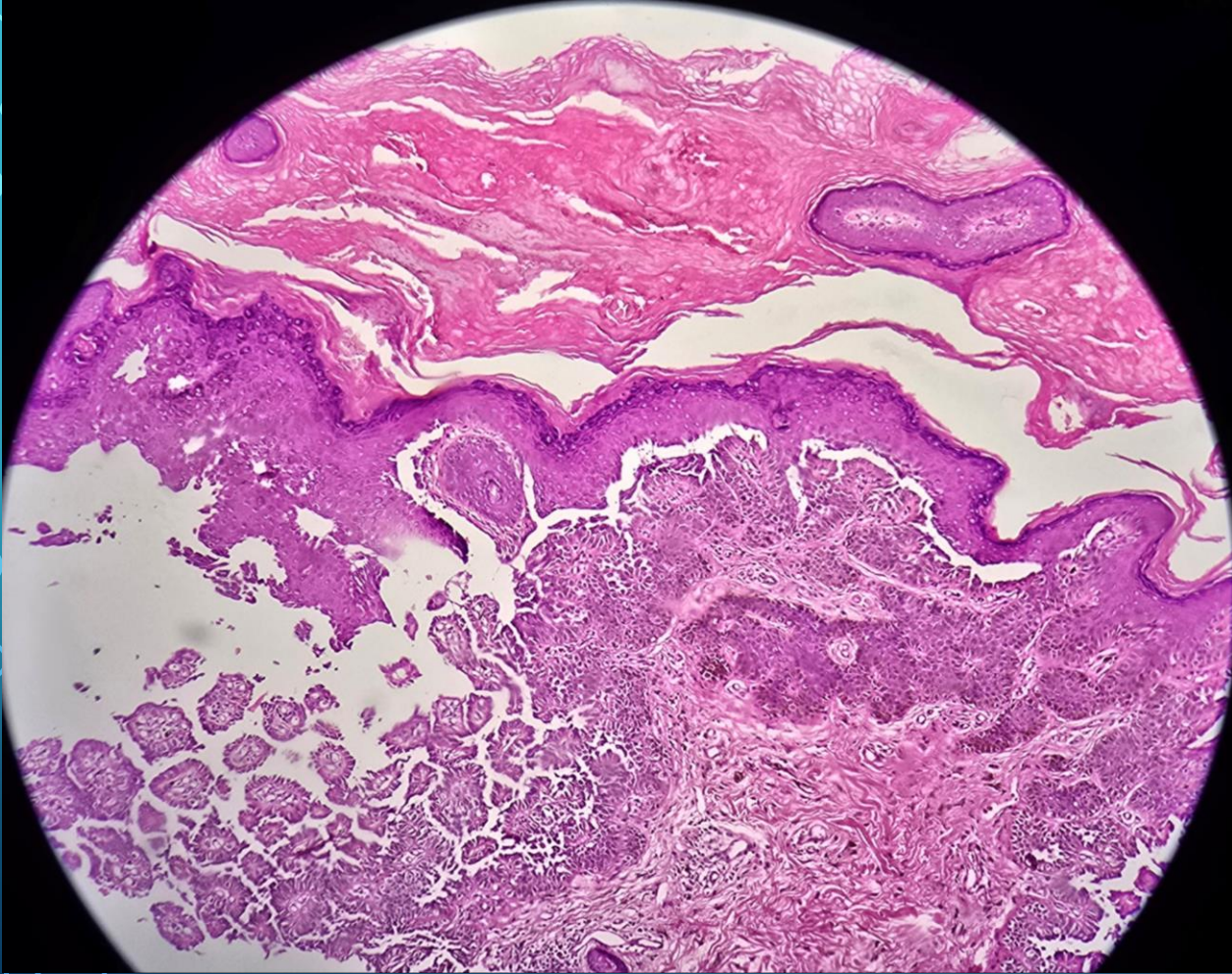
DDX:

- Acanthosis nigricans
- Confluent and reticulated papillomatosis
- Lichen planus

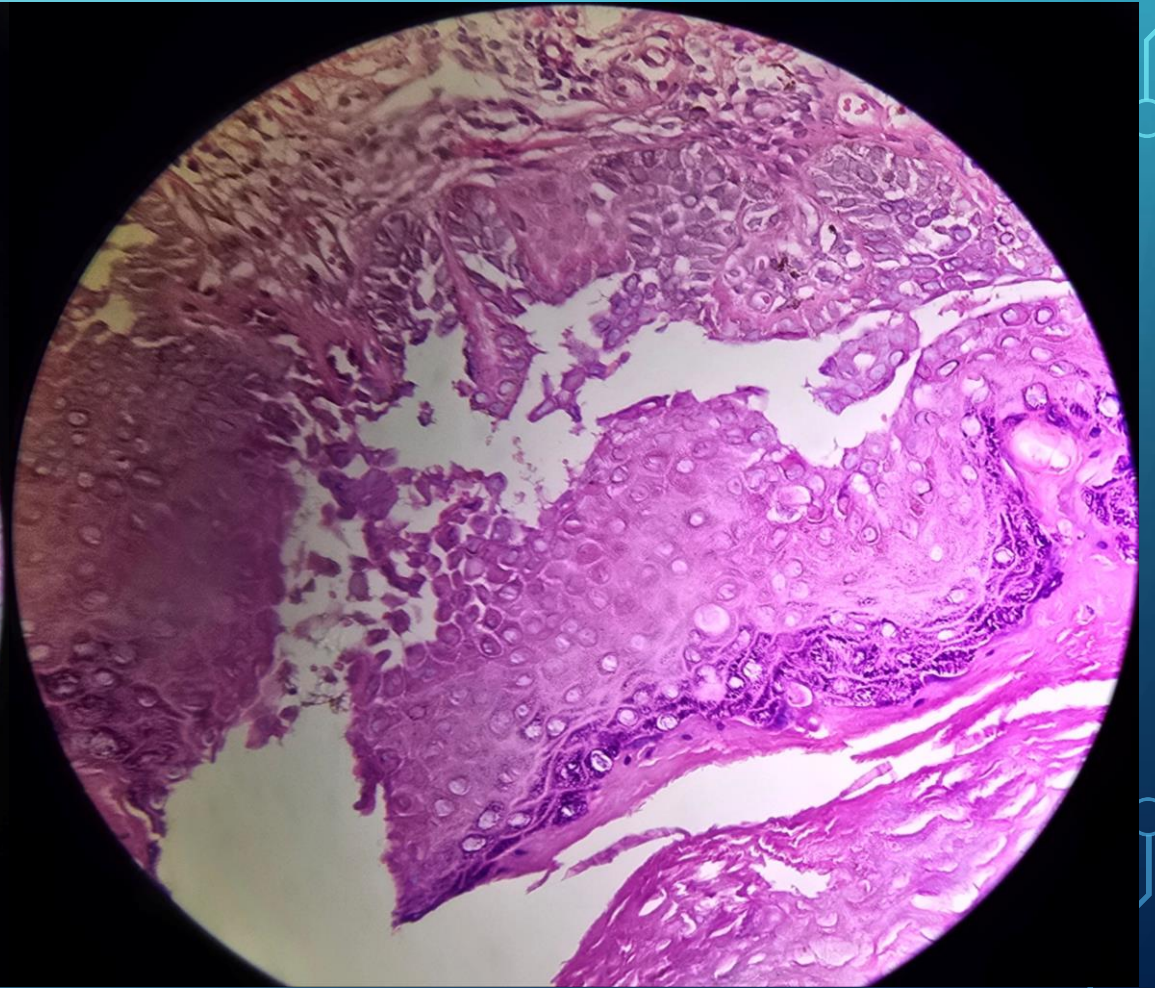
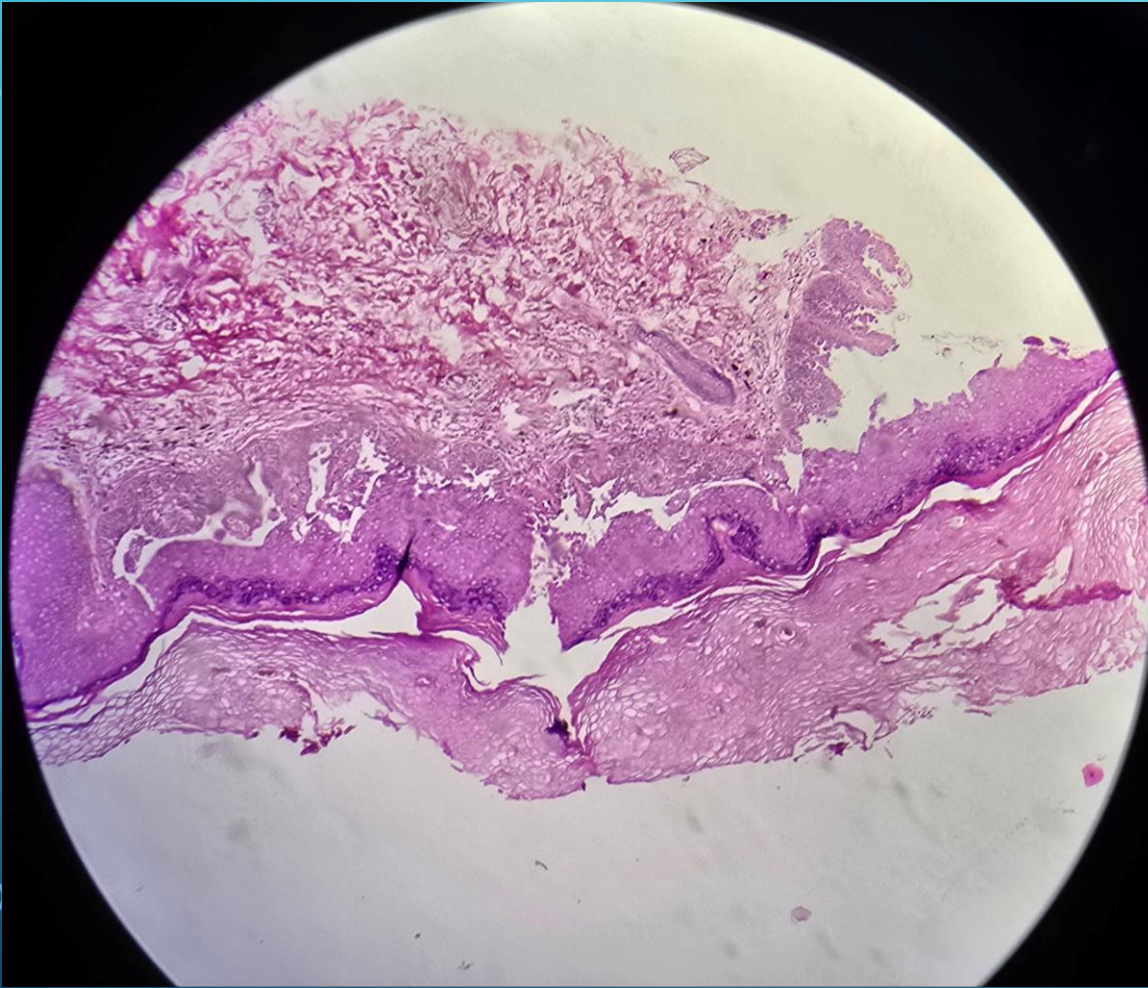
MICROSCOPY:



MICROSCOPY:



MICROSCOPY:



HISTOPATHOLOGIC FEATURES:

- Suprabasal acantholysis
- Acantholytic cells
- Hyperkeratosis and parakeratosis
- papillomatosis
- Increased melanin pigmentation

DX:

- Although a history of acantholytic lesions was not reported, the diagnosis of CARP is favored; however, the suprabasal acantholysis observed should be considered as a Hailey–Hailey-like pattern, and definitive diagnosis requires clinical correlation and exclusion of Hailey–Hailey disease.

CASE 2:

- Female 50 year old with inguinal lesion (1404)

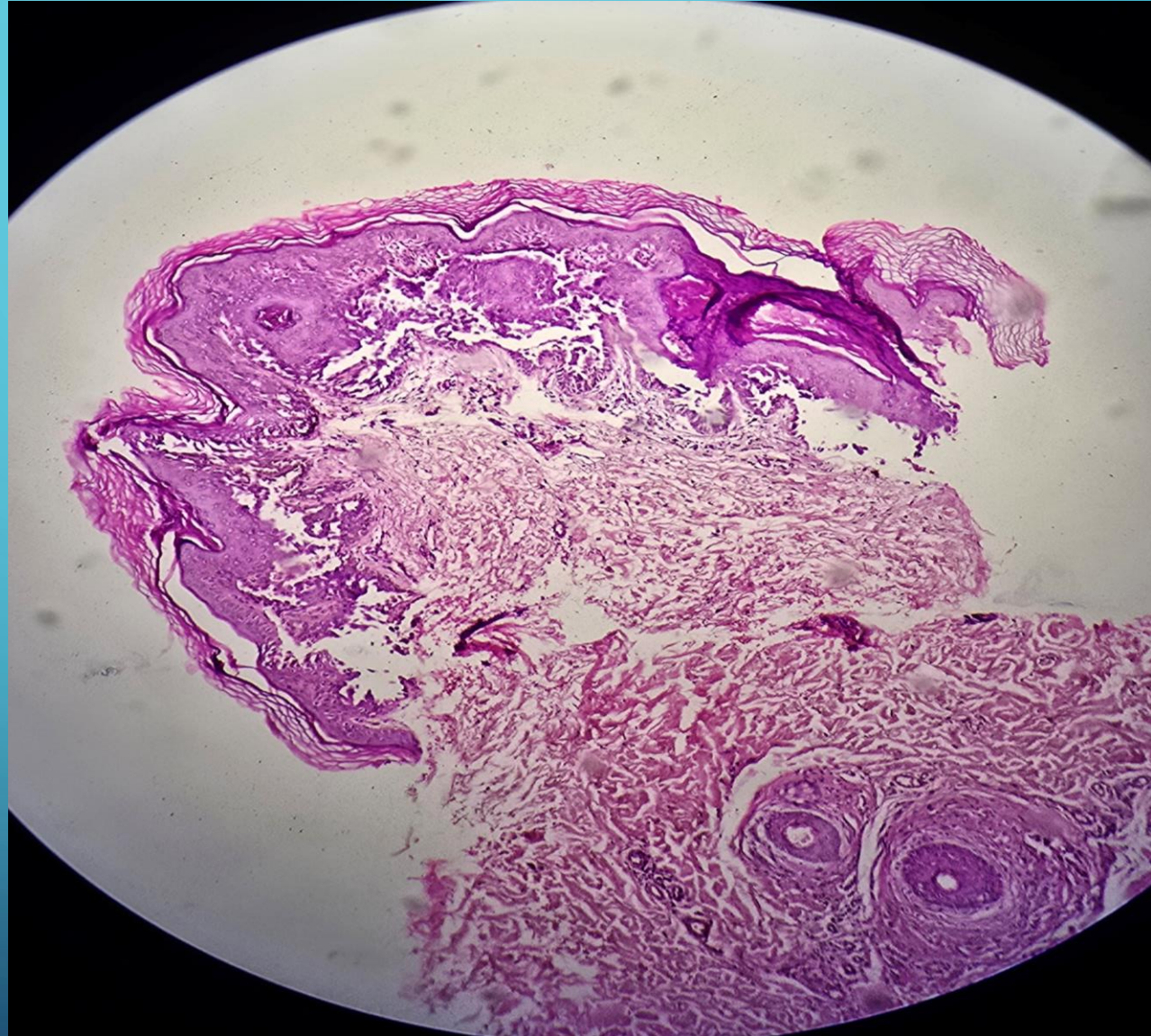
MACROSCOPIC DESCRIPTION

- Received specimen in formalin consist one soft tan pieces measuring 0.3 *0.2 *0.2 cm, covered by skin in one side ,totally submitted one block.

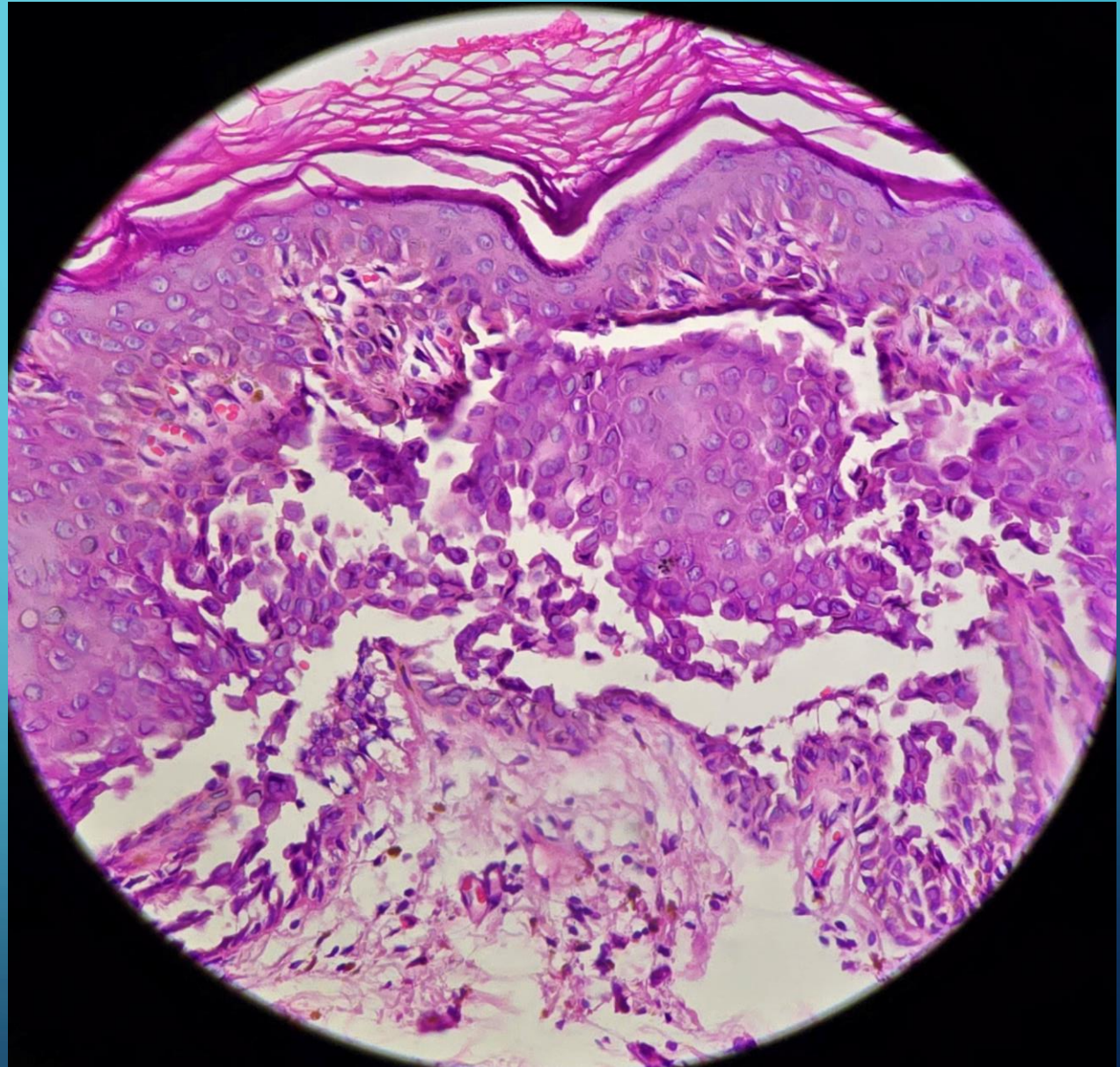
DIFFERENTIAL DIAGNOSIS

- Darier disease
- Confluent and reticulated papillomatosis
- Acanthosis nigricans

MICROSCOPY:



MICROSCOPY:



The background is a solid teal color with a subtle gradient. In the four corners, there are decorative white line-art elements resembling circuit traces or neural network connections, with small circles at the end of the lines.

**Thanks for your
attention**